



**MIAMI-DADE COUNTY**  
**BUILDING CODE COMPLIANCE OFFICE (BCCO)**  
**PRODUCT CONTROL DIVISION**

**MIAMI-DADE COUNTY, FLORIDA**  
**METRO-DADE FLAGLER BUILDING**  
**140 WEST FLAGLER STREET, SUITE 1603**  
**MIAMI, FLORIDA 33130-1563**  
 (305) 375-2901 FAX (305) 372-6339

**NOTICE OF ACCEPTANCE (NOA)**

[www.miamidade.gov/buildingcode](http://www.miamidade.gov/buildingcode)

**Montag Windows & Doors, LLC**  
**215 Hembree Park Drive, Suite 100**  
**Roswell, GA 30076**

**SCOPE:**

This NOA is being issued under the applicable rules and regulations governing the use of construction materials. The documentation submitted has been reviewed by Miami-Dade County Product Control Division and accepted by the Board of Rules and Appeals (BORA) to be used in Miami Dade County and other areas where allowed by the Authority Having Jurisdiction (AHJ).

This NOA shall not be valid after the expiration date stated below. The Miami-Dade County Product Control Division (In Miami Dade County) and/or the AHJ (in areas other than Miami Dade County) reserve the right to have this product or material tested for quality assurance purposes. If this product or material fails to perform in the accepted manner, the manufacturer will incur the expense of such testing and the AHJ may immediately revoke, modify, or suspend the use of such product or material within their jurisdiction. BORA reserves the right to revoke this acceptance, if it is determined by Miami-Dade County Product Control Division that this product or material fails to meet the requirements of the applicable building code. This product is approved as described herein, and has been designed to comply with the Florida Building Code, including the High Velocity Hurricane Zone.

**DESCRIPTION: Wood Fixed Window – L.M.I.**

**APPROVAL DOCUMENT:** Drawing No. **W08-68**, titled “Wood Frame Fixed Window (L.M.I.)”, sheets 1 through 7 of 7, dated 07/19/08 with revision A dated 02/12/09, prepared by Al-Farooq Corporation, signed and sealed by Humayoun Farooq, P.E., bearing the Miami-Dade County Product Control Approval stamp with the Notice of Acceptance number and approval date by the Miami-Dade County Product Control Division.

**MISSILE IMPACT RATING: Large and Small Missile Impact Resistant**

**LABELING:** Each unit shall bear a permanent label with the manufacturer's name or logo, city, state and following statement: "Miami-Dade County Product Control Approved", unless otherwise noted herein.

**RENEWAL** of this NOA shall be considered after a renewal application has been filed and there has been no change in the applicable building code negatively affecting the performance of this product.

**TERMINATION** of this NOA will occur after the expiration date or if there has been a revision or change in the materials, use, and/or manufacture of the product or process. Misuse of this NOA as an endorsement of any product, for sales, advertising or any other purposes shall automatically terminate this NOA. Failure to comply with any section of this NOA shall be cause for termination and removal of NOA.

**ADVERTISEMENT:** The NOA number preceded by the words Miami-Dade County, Florida, and followed by the expiration date may be displayed in advertising literature. If any portion of the NOA is displayed, then it shall be done in its entirety.

**INSPECTION:** A copy of this entire NOA shall be provided to the user by the manufacturer or its distributors and shall be available for inspection at the job site at the request of the Building Official. This NOA consists of this page 1 and evidence page E-1 as well as approval document mentioned above. The submitted documentation was reviewed by **Manuel Perez, P.E.**



**NOA No. 08-1124.07**  
**Expiration Date: March 18, 2014**  
**Approval Date: March 18, 2009**  
**Page 1**

Montag Windows & Doors, LLC

NOTICE OF ACCEPTANCE: EVIDENCE SUBMITTED

**A. DRAWINGS**

1. Manufacturer's die drawings and sections.
2. Drawing No **W08-68**, Sheets 1 through 7 of 7, titled "Wood Frame Fixed Window (L.M.I.)", dated 07/19/08 with revision A dated 02/12/09, prepared by Al-Farooq Corporation, signed and sealed by Humayoun Farooq, P.E.

**B. TESTS**

1. Test reports on:
  - 1) Air Infiltration Test, per FBC, TAS 202-94
  - 2) Uniform Static Air Pressure Test, Loading per FBC TAS 202-94
  - 3) Water Resistance Test, per FBC, TAS 202-94
  - 4) Large Missile Impact Test per FBC, TAS 201-94
  - 5) Cyclic Wind Pressure Loading per FBC, TAS 203-94along with marked-up drawings and installation diagram of a wood fixed window, prepared by American Test Lab of South Florida, Test Report No. ATLSF-0928.01-07, dated 09/06/08, signed and sealed by William R. Mehner, P.E.
2. Test reports on:
  - 1) Air Infiltration Test, per FBC, TAS 202-94
  - 2) Uniform Static Air Pressure Test, Loading per FBC TAS 202-94
  - 3) Water Resistance Test, per FBC, TAS 202-94
  - 4) Large Missile Impact Test per FBC, TAS 201-94
  - 5) Cyclic Wind Pressure Loading per FBC, TAS 203-94
  - 6) Forced Entry Test, per FBC 2411 3.2.1, TAS 202-94along with marked-up drawings and installation diagram of a wood fixed window, prepared by American Test Lab of South Florida, Test Report No. **ATLSF-1004.01-07**, dated 09/06/08, signed and sealed by William R. Mehner, P.E. (*For reference only*)

**C. CALCULATIONS**

1. Anchor verification calculations and structural analysis, complying with FBC-2004 and 2007, prepared by Al-Farooq Corporation, dated 11/19/08 and 02/10/09, signed and sealed by Humayoun Farooq, P.E. **Complies with ASTM E1300-02/04**

**D. QUALITY ASSURANCE**

1. Miami Dade Building Code Compliance Office (BCCO).

**E. MATERIAL CERTIFICATIONS**

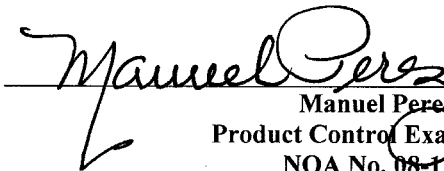
1. Notice of Acceptance No. **07-1116.04** issued to **E.I. DuPont DeNemours & Co., Inc.** for their "**DuPont SentryGlas® Plus**" dated 01/03/08, expiring on 01/14/12.

**F. STATEMENTS**

1. Statement letter of conformance, dated August 27, 2008, signed and sealed by Humayoun Farooq, P.E.
2. Statement letter of no financial interest, dated August 27, 2008, signed and sealed by Humayoun Farooq, P.E.

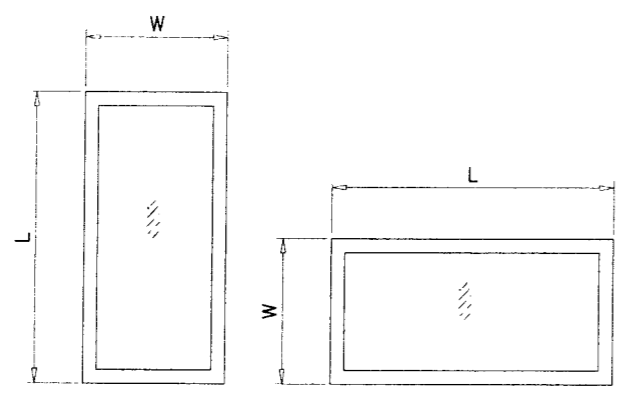
**G. OTHER**

1. None.

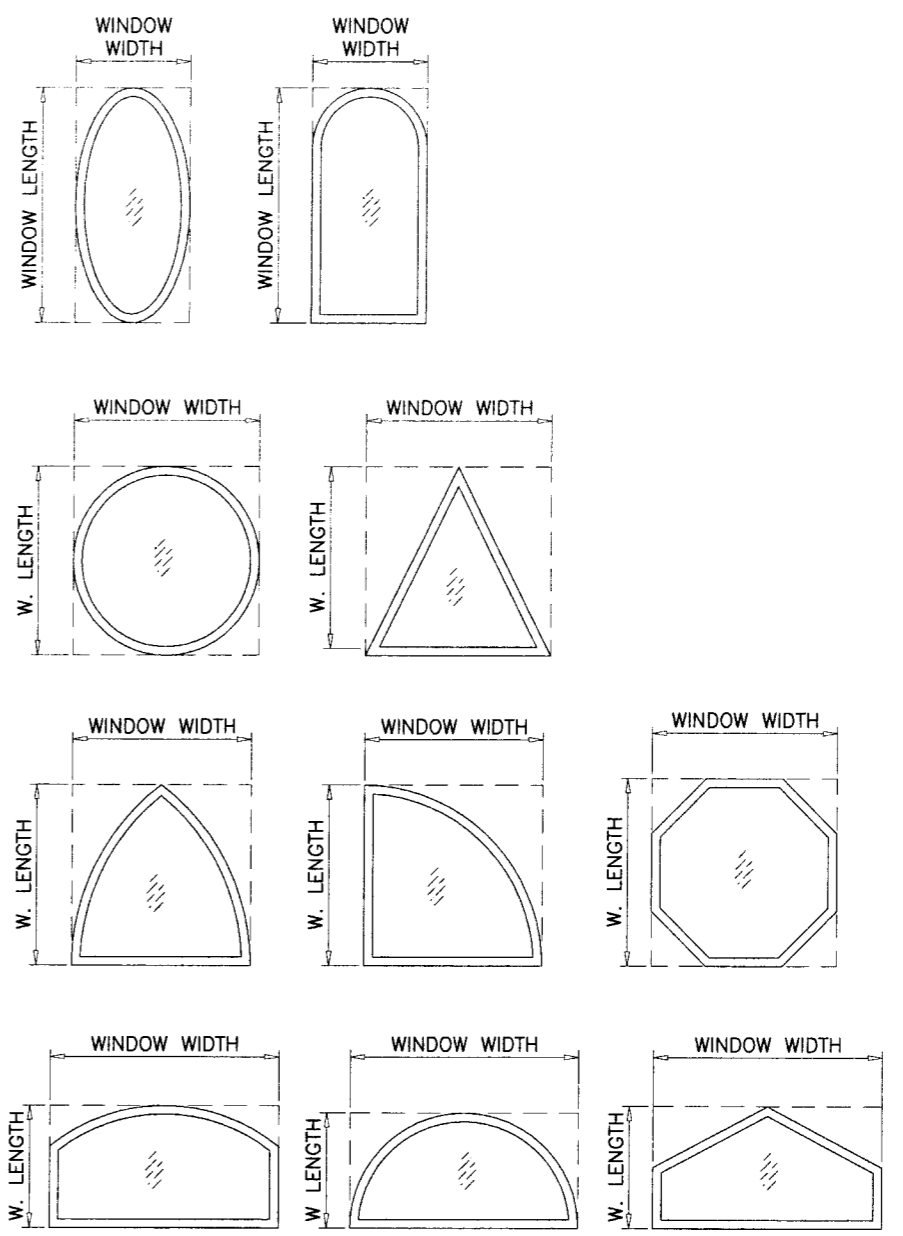
  
Manuel Perez, P.E.  
Product Control Examiner  
NOA No. 08-1124.07  
Expiration Date: March 18, 2014  
Approval Date: March 18, 2009



DESIGN LOAD CAPACITY - PSF			
WINDOW DIMS.		INSULATING LAMINATED GLASS	
WIDTH	LENGTH	EXT.(+)	INT.(-)
48"	60"	65.0	85.0
54"		65.0	85.0
60"		65.0	85.0
66"		65.0	85.0
72"		65.0	85.0
48"	66"	65.0	85.0
54"		65.0	85.0
60"		65.0	85.0
66"		59.1	77.3
72"		59.1	77.3
48"	72"	65.0	85.0
54"		65.0	85.0
60"		65.0	85.0
66"		59.1	77.3
72"		54.2	70.8
48"	78"	65.0	85.0
54"		65.0	85.0
60"		65.0	85.0
66"		59.1	77.3
72"		54.2	70.8
48"	84"	65.0	85.0
54"		65.0	85.0
60"		65.0	85.0
66"		59.1	77.3
72"		54.2	70.8
48"	90"	65.0	85.0
54"		65.0	85.0
60"		65.0	85.0
66"		59.1	77.3
72"		54.2	70.8
48"	96"	65.0	85.0
54"		65.0	85.0
60"		65.0	85.0
66"		59.1	77.3
72"		54.2	70.8
48"	102"	65.0	85.0
54"		65.0	85.0
60"		65.0	85.0
66"		59.1	77.3
72"		54.2	70.8
48"	108"	65.0	85.0
54"		65.0	85.0
60"		65.0	85.0
48"	114"	65.0	85.0
54"		65.0	85.0
48"	120"	65.0	85.0
54"		65.0	85.0



NOTE:  
WIDTH AND LENGTH DIMENSIONS CAN BE ORIENTED VERTICALLY OR HORIZONTALLY AS SHOWN ABOVE.



ALLOWABLE LOADS FOR ALTERNATE SHAPES AS SHOWN ABOVE OR SIMILAR CAN BE VERIFIED BY INSCRIBING PICTURE WINDOW SHAPE WITHIN SQUARE OR RECTANGLE AS SHOWN IN DOTTED LINES AND OBTAINING ALLOWABLE LOADS FROM THOSE SHAPES.

Engr. DR. HUMAYOUN FAROOQ  
STRUCTURES  
FLA. PE # 16557  
C.A.N. 3538

FEB 12 2009

Approved to comply with the Florida Building Code  
Date: MARCH 18 2009  
PROJECT: 08-1124.07  
Project Director: [Signature]

**afc**

**AL-FAROOQ CORPORATION**  
ENGINEERS & PRODUCT DEVELOPMENT  
12335 S.W. 87 AVE  
MIAMI, FLORIDA 33174  
TEL. (305) 264-8100 FAX. (305) 262-6978  
COMP - ANL \ W08 - 68MNA

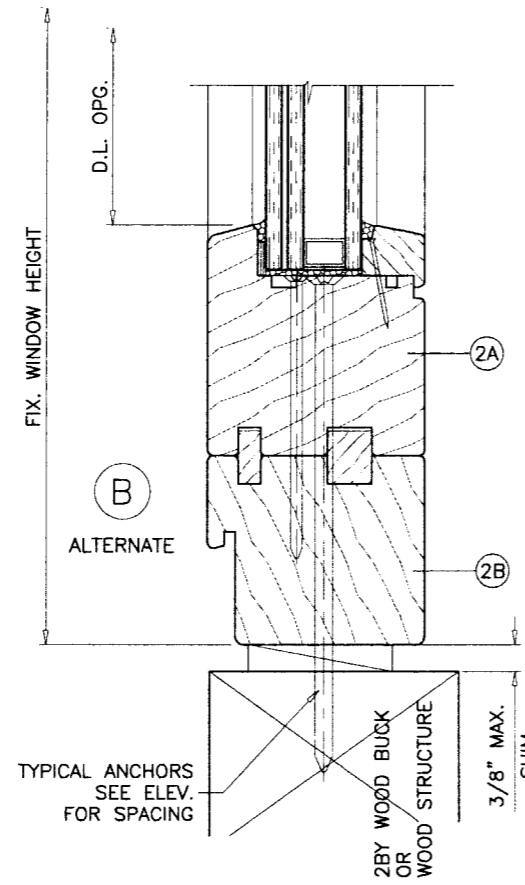
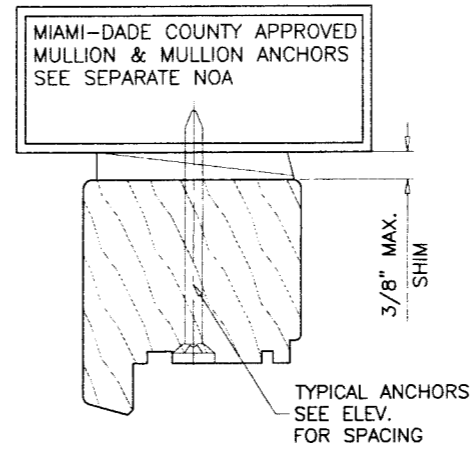
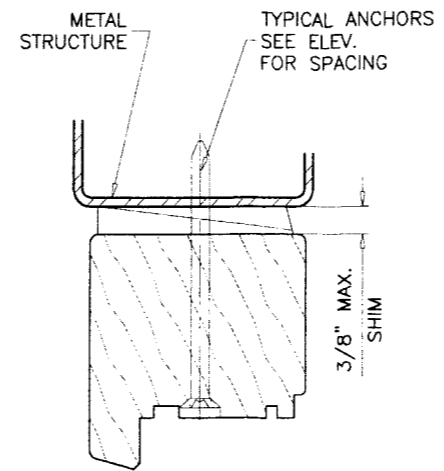
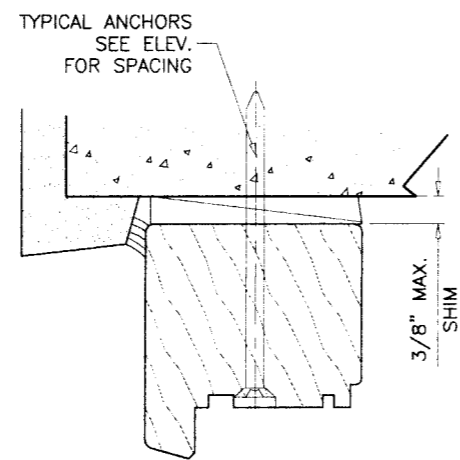
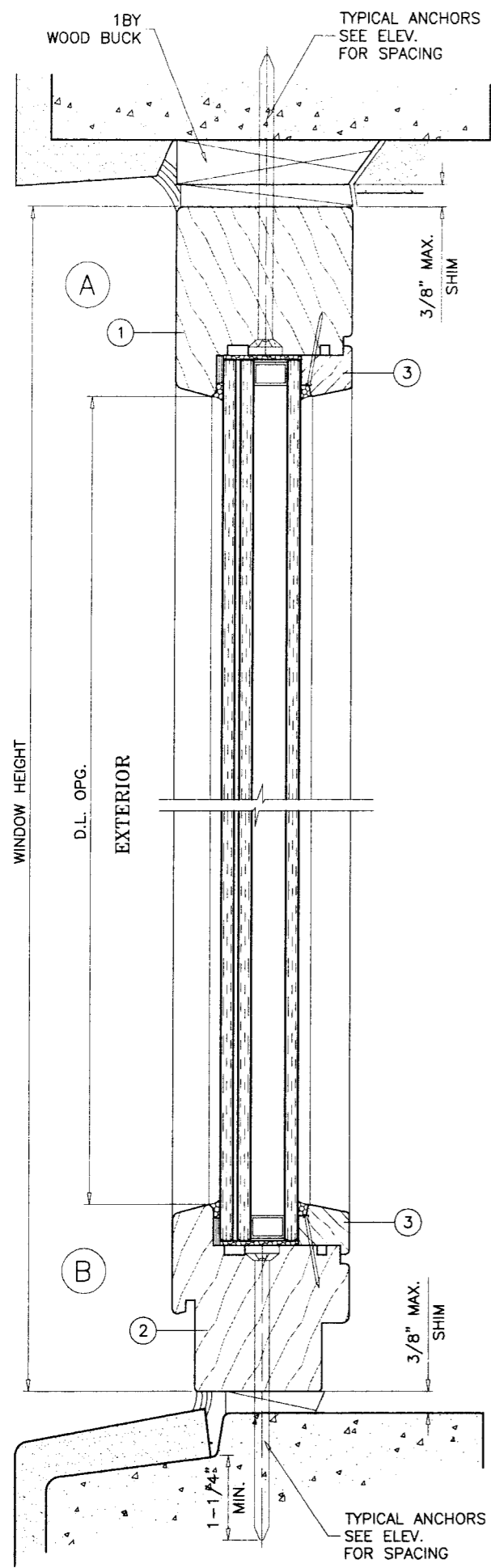
---

WOOD FRAME FIXED WINDOW (L.M.I.)  
**MONTAG WINDOWS & DOORS**  
215 HEMBREE PARK DRIVE, SUITE 100  
ROSWELL, GA 30076  
TEL. (866) 562-1728 FAX. (866) 563-1728

revisions:	no	date	by	description
	A	02.12.09		CHART REV.

date: 07-19-08  
scale: 1/2"=1'-0"  
dr. by: HAMID  
chk. by:

drawing no. **W08-68**  
sheet 2 of 7



**TYPICAL ANCHORS:** SEE ELEV. FOR SPACING

**1/4" DIA. ULTRACON BY 'ELCO'** ( $F_u=177$  KSI,  $F_y=155$  KSI)

INTO 2BY WOOD BUCKS OR WOOD STRUCTURES

1-1/2" MIN. PENETRATION INTO WOOD

THRU 1BY BUCKS INTO CONC. OR MASONRY

1-1/4" MIN. EMBED INTO CONC. OR MASONRY

DIRECTLY INTO CONC. OR MASONRY

1-1/4" MIN. EMBED INTO CONC. OR MASONRY

**#14 SMS OR SELF DRILLING SCREWS** (GRADE 2 CRS)

INTO MIAMI-DADE COUNTY APPROVED MULLIONS (MIN. THK. = .090")

INTO METAL STRUCTURES

STEEL : 12 GA. MIN. ( $F_y = 36$  KSI MIN.)

ALUMINUM : 1/8" THK. MIN. (6063-T5 MIN.)

(STEEL IN CONTACT WITH ALUMINUM TO BE PLATED OR PAINTED)

**TYPICAL EDGE DISTANCE**

INTO CONCRETE AND MASONRY = 2-1/2" MIN.

INTO WOOD STRUCTURE = 1" MIN.

INTO METAL STRUCTURE = 3/4" MIN.

CONCRETE  $f'_c = 3000$  PSI MIN.

MASONRY  $f'_m = 1500$  PSI MIN.

**WEEPHOLES:**

W = 5/32" X 7/8" WEEP SLOTS AT JAMB AND SILL

**SEALANTS:**

WINDOW PERIMETER SEALED WITH SILICONE SEALANT.

WOOD BUCKS AND METAL STRUCTURE NOT BY MONTAG  
MUST SUSTAIN LOADS IMPOSED BY GLAZING SYSTEM  
AND TRANSFER THEM TO THE BUILDING STRUCTURE.

Engr: DR. HUMAYOUN FAROOQ  
STRUCTURES  
FLA. PE # 16557  
C.A.N. 3538

APPROVED AS SHOWN WITH THE  
MARCH 18, 2009  
08-1124.07  
Manuel P. Prez

FEB 12 2009

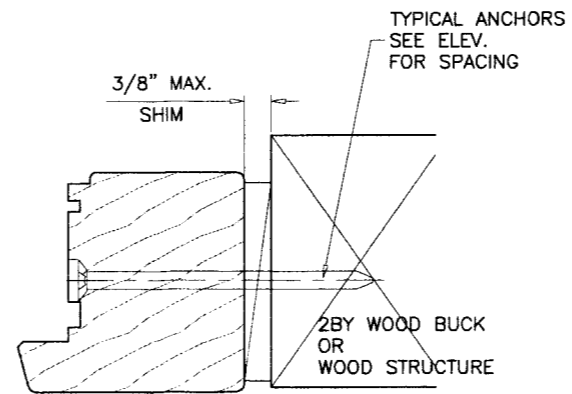
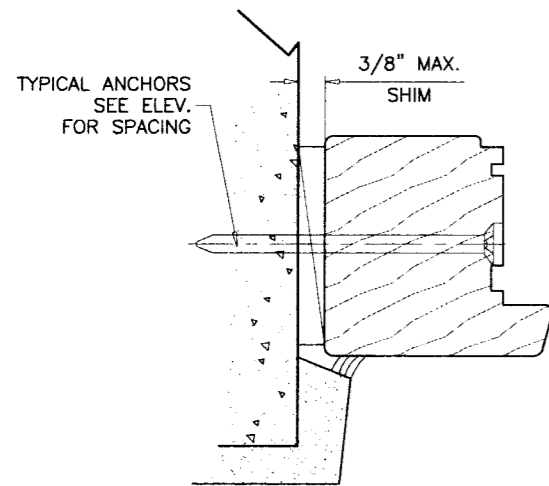
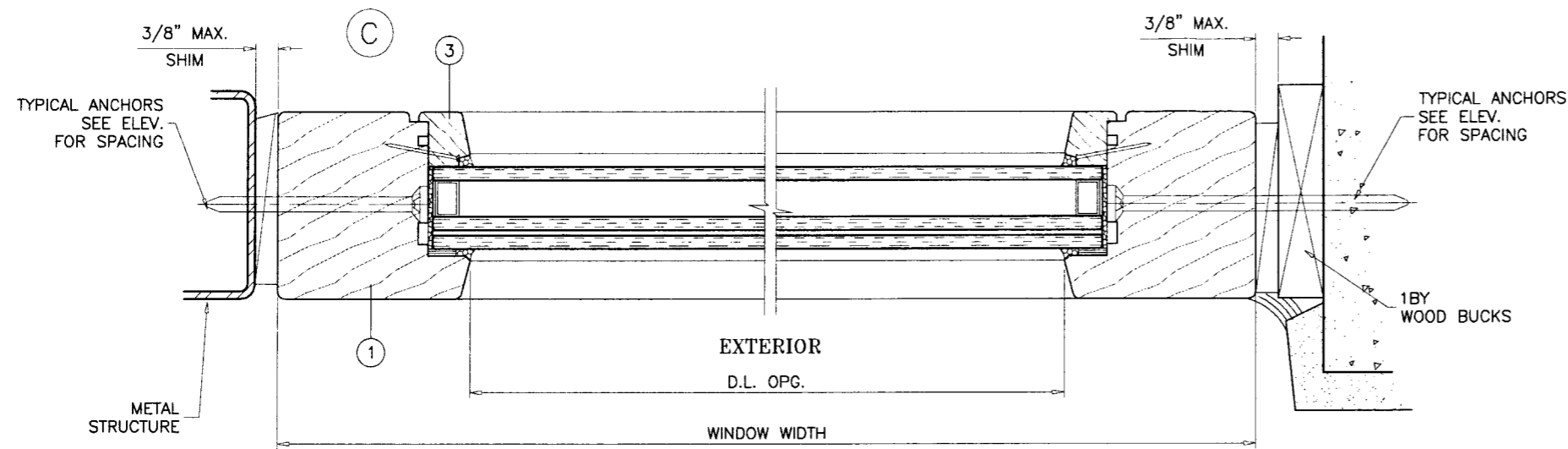
**af c**  
**AL-FAROOQ CORPORATION**  
ENGINEERS & PRODUCT DEVELOPMENT  
1235 S.W. 87 AVE  
MIAMI, FLORIDA 33174  
TEL. (305) 264-8100 FAX. (305) 262-6978  
COMP-ANL\W08-68MNA

WOOD FRAME FIXED WINDOW (L.M.I.)  
**MONTAG WINDOWS & DOORS**  
215 HEMBREE PARK DRIVE, SUITE 100  
ROSWELL, GA 30076  
TEL. (866) 562-1728 FAX. (866) 563-1728

no	date	by	description
A	02.12.09	NAILS REV.	

date: 07-19-08  
scale: 3/8" = 1"  
dr. by: HAMID  
chk. by:

drawing no.  
**W08-68**  
sheet 3 of 7



Engr. DR. HUMAYOUN FAROOQ  
STRUCTURES  
FLA. PE # 16557  
C.A.N. 3538

*H*  
FEB 12 2009

Approved on behalf of the  
Professional Engineer  
MARCH 18, 2009  
08-1124.07  
*Manuel*

**af c**  
**AL-FAROOQ CORPORATION**  
ENGINEERS & PRODUCT DEVELOPMENT  
1235 S.W. 87 AVE  
MIAMI, FLORIDA 33174  
TEL. (305) 264-8100 FAX. (305) 262-6978  
COMP - ANL \ W08 - 68MNA

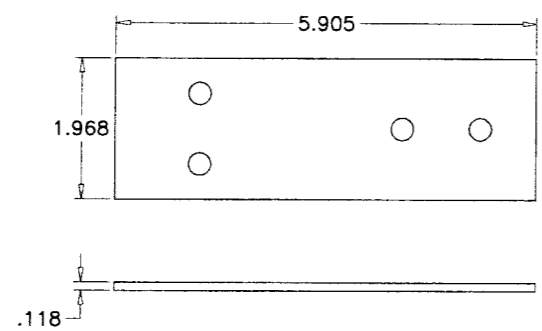
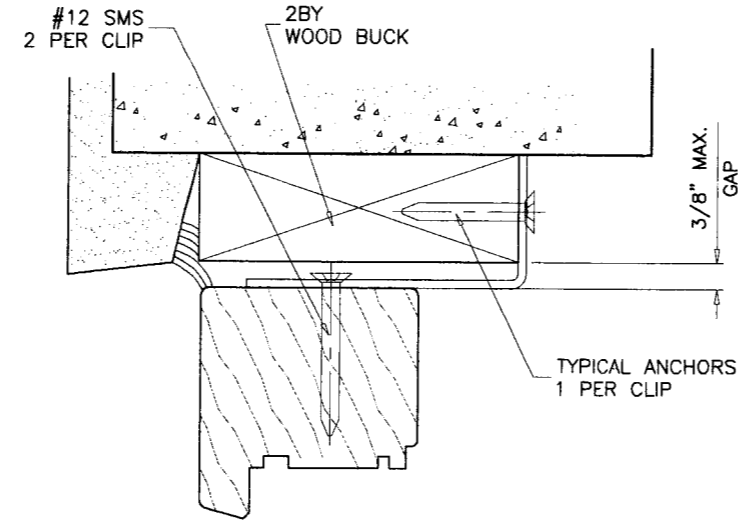
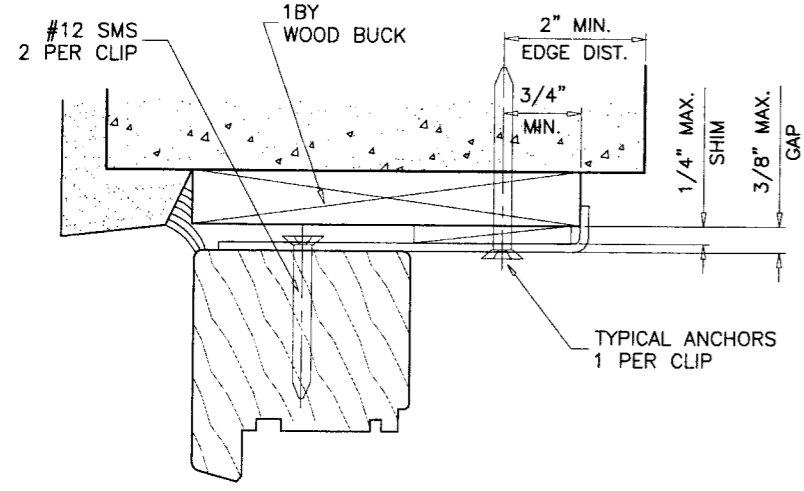
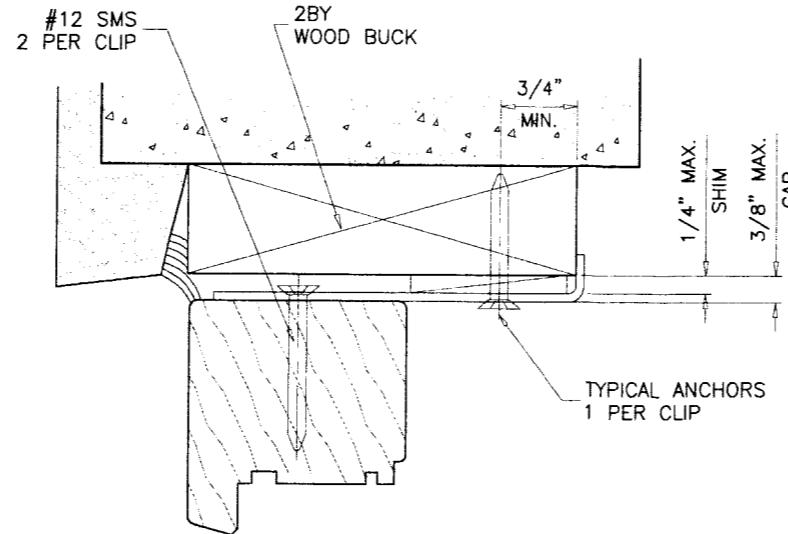
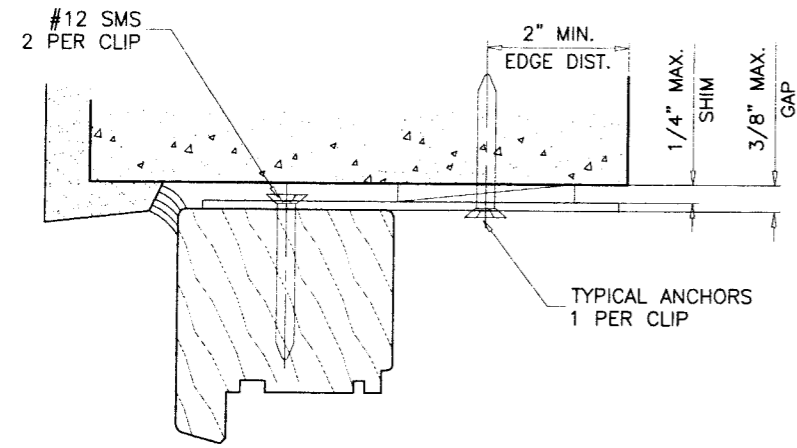
WOOD FRAME FIXED WINDOW (L.M.I.)  
**MONTAG WINDOWS & DOORS**  
215 HEMBREE PARK DRIVE, SUITE 100  
ROSWELL, GA 30076  
TEL. (866) 562-1728 FAX. (866) 563-1728

revisions:

no	date	by	description
A	02.12.09		NAILS REV.

date: 07-19-08  
scale: 3/8" = 1"  
dr. by: HAMID  
chk. by:

drawing no.  
**W08-68**  
sheet 4 of 7



STRAP CLIP  
GALV. STEEL

**TYPICAL ANCHORS:** SEE ELEV. FOR SPACING  
**ANCHORS THRU STRAP CLIPS**  
**#12 SMS**  
 INTO 2BY WOOD BUCKS OR WOOD STRUCTURE  
 1-1/2" MIN. PENETRATION INTO WOOD  
**ANCHOR EDGE DISTANCES**  
 INTO WOOD STRUCTURE = 1/2" MIN.

Engr: DR. HUMAYOUN FAROOQ  
 STRUCTURES  
 FLA. PE # 16557  
 C.A.N. 3538  
 FEB 12 2009

MARCH 18 2009  
 08-1124-07  
*Manuel Perez*

**af c**  
**AL-FAROOQ CORPORATION**  
 ENGINEERS & PRODUCT DEVELOPMENT  
 1235 S.W. 87 AVE  
 MIAMI, FLORIDA 33174  
 TEL. (305) 264-8100 FAX. (305) 262-6978  
 COMP-ANL\W08-68MNA

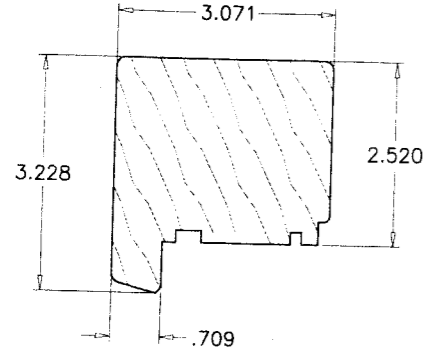
WOOD FRAME FIXED WINDOW (L.M.I.)  
**MONTAG WINDOWS & DOORS**  
 215 HEMBREE PARK DRIVE, SUITE 100  
 ROSWELL, GA 30076  
 TEL. (866) 562-1728 FAX. (866) 563-1728

revisions:

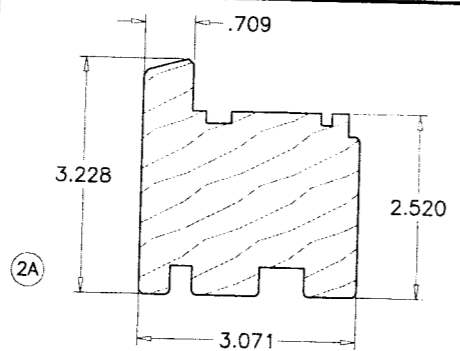
no	date	description
A	02.12.09	NO CHANGE THIS SHEET

date: 07-19-08  
 scale: 3/8" = 1"  
 dr. by: HAMID  
 chk. by:

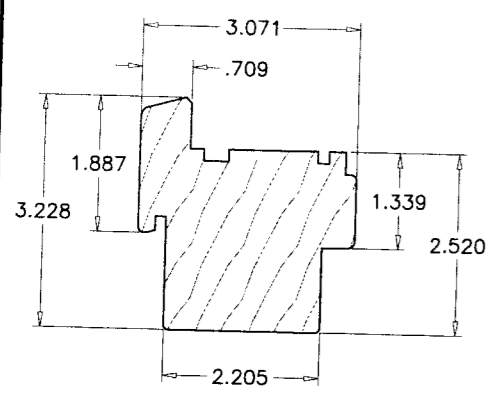
drawing no.  
**W08-68**  
 sheet 5 of 7



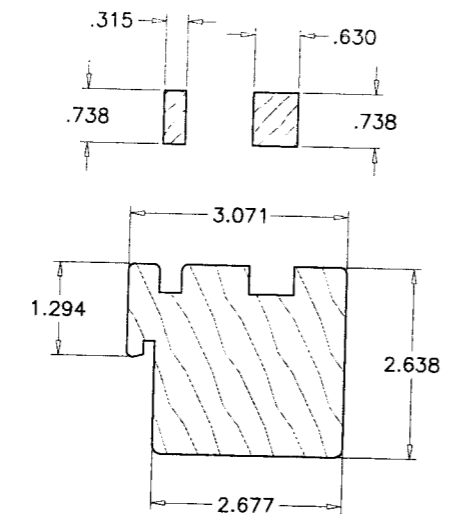
① FRAME HEAD/JAMB



②B

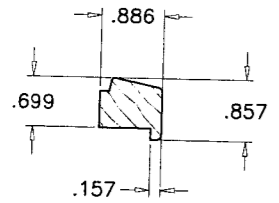


② FRAME SILL

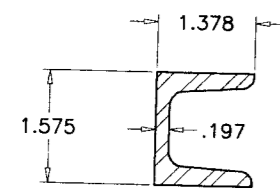


②A

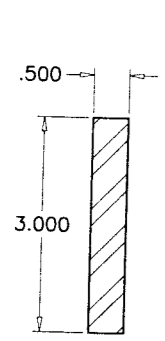
ALT. FRAME SILL



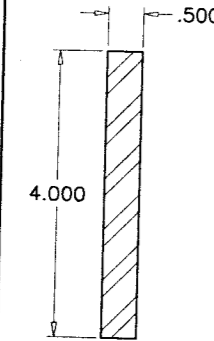
③ GLAZING BEAD



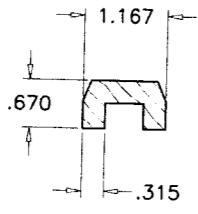
⑤ MULLION CHANNEL



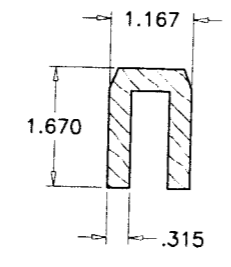
⑤A MULLION BAR



⑤B MULLION BAR

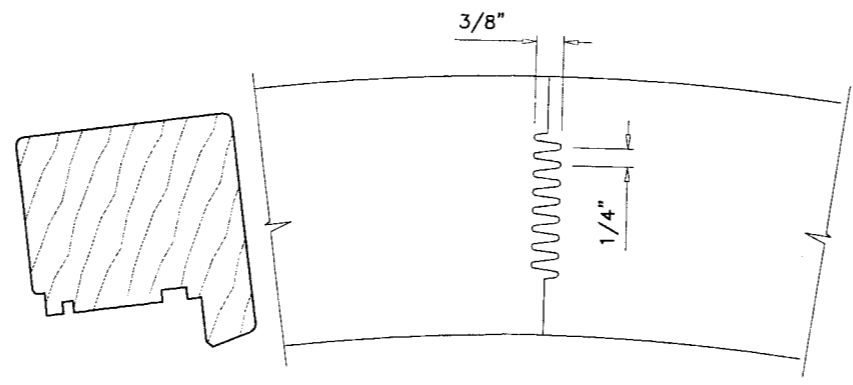


⑥A MULLION COVER

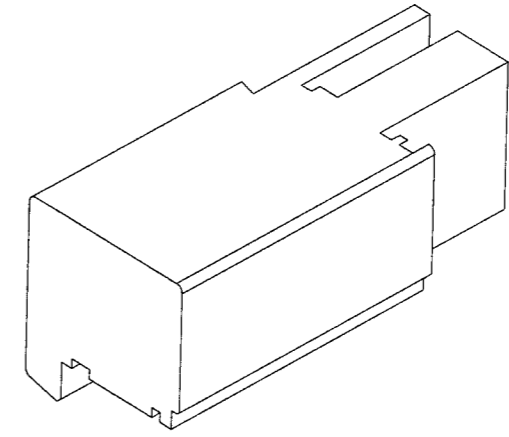


⑥B MULLION COVER

ITEM	PART #	QUANTITY	DESCRIPTION	MATERIAL	MANF./SUPPLIER/REMARKS
1	-	3/ WDW.	FRAME HEAD/JAMB	MERANTI WOOD	-
2	-	1/ WDW.	FRAME SILL	MERANTI WOOD	-
2A	-	1/ WDW.	ALT. FRAME SILL (TOP)	MERANTI WOOD	-
2B	-	1/ WDW.	ALT. FRAME SILL (BOTTOM)	MERANTI WOOD	-
3	-	4/ WDW.	GLAZING BEAD	MERANTI WOOD	-
4	-	4/ WDW.	GLAZING TAPE	FOAM	-
5	-	1/ MULLION	MULLION CHANNEL	GALV. STEEL	-
5A	-	1/ MULLION	1/2" X 3" MULLION BAR	GALV. STEEL	-
5B	-	1/ MULLION	1/2" X 4" MULLION BAR	GALV. STEEL	-
6A	-	1/ MULLION	MULLION COVER	MERANTI WOOD	-
6B	-	1/ MULLION	MULLION COVER	MERANTI WOOD	-



CIRCULAR WINDOWS  
FINGER JOINT



RECT. OR SQUARE WINDOWS  
MORTISE AND TENON JOINT

FRAME CORNERS

FRAME CORNERS SEALED/GLUED WITH  
WATER PROOF ADHESIVE

Engr: DR. HUMAYOUN FAROOQ  
STRUCTURES  
FLA. PE # 16557  
C.A.N. 3538

FEB 12 2009

MARCH 18, 2009  
08-1124.07  
*Manuel Perez*

**af c**  
**AL-FAROOQ CORPORATION**  
 ENGINEERS & PRODUCT DEVELOPMENT  
 1235 S.W. 87 AVE  
 MIAMI, FLORIDA 33174  
 TEL. (305) 264-8100 FAX. (305) 262-6978  
 COMP-ANL\W08-68MNA

WOOD FRAME FIXED WINDOW (L.M.I.)  
**MONTAG WINDOWS & DOORS**  
 215 HEMBREE PARK DRIVE, SUITE 100  
 ROSWELL, GA 30076  
 TEL. (866) 562-1728 FAX. (866) 563-1728

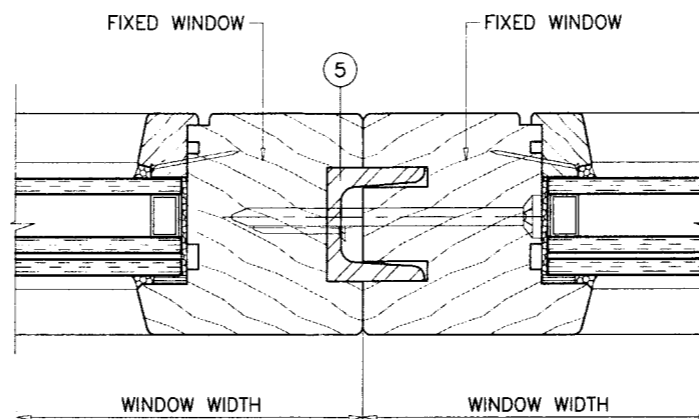
revisions:  
 no. date by description  
 A 02.12.09 NO CHANGE THIS SHEET

date: 07-19-08  
 scale: 3/8" = 1"  
 dr. by: HAMID  
 chk. by:

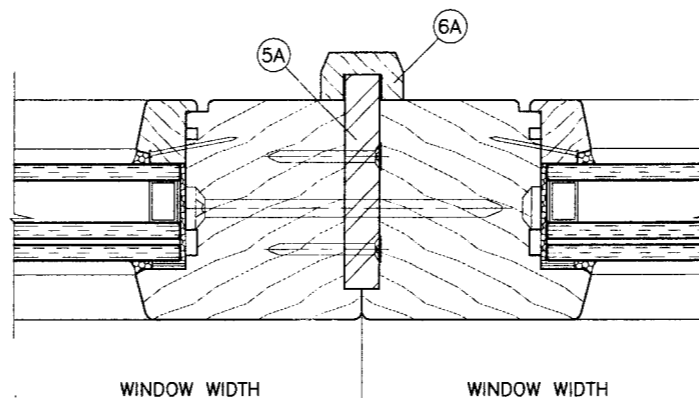
drawing no.  
**W08-68**

sheet 6 of 7

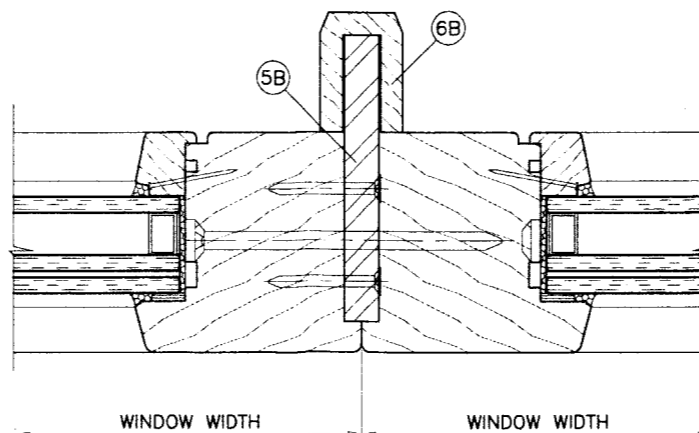
MULLION LOAD CAPACITY - PSF							
WINDOW DIMS. WIDTH (W) LENGTH (L)		MULLION TYPE '1'		MULLION TYPE '2'		MULLION TYPE '3'	
		2 ANCHORS AT EACH SIDE OF MULL	3 ANCHORS AT EACH SIDE OF MULL	2 ANCHORS AT EACH SIDE OF MULL	3 ANCHORS AT EACH SIDE OF MULL	3 ANCHORS AT EACH SIDE OF MULL	4 ANCHORS AT EACH SIDE OF MULL
		EXT. (+) INT. (-)	EXT. (+) INT. (-)	EXT. (+) INT. (-)	EXT. (+) INT. (-)	EXT. (+) INT. (-)	EXT. (+) INT. (-)
24"	66"	85.0	85.0	85.0	85.0	85.0	85.0
30"		85.0	85.0	85.0	85.0	85.0	85.0
36"		85.0	85.0	85.0	85.0	85.0	85.0
42"		85.0	85.0	85.0	85.0	85.0	85.0
48"		85.0	85.0	85.0	85.0	85.0	85.0
24"	72"	85.0	85.0	85.0	85.0	85.0	85.0
30"		85.0	85.0	85.0	85.0	85.0	85.0
36"		85.0	85.0	85.0	85.0	85.0	85.0
42"		80.9	85.0	80.9	85.0	85.0	85.0
48"		75.2	85.0	75.2	85.0	85.0	85.0
24"	78"	85.0	85.0	85.0	85.0	85.0	85.0
30"		85.0	85.0	85.0	85.0	85.0	85.0
36"		80.2	85.0	80.2	85.0	85.0	85.0
42"		72.4	85.0	72.4	85.0	85.0	85.0
48"		66.8	85.0	66.8	85.0	85.0	85.0
24"	84"	85.0	85.0	85.0	85.0	85.0	85.0
30"		83.7	85.0	83.7	85.0	85.0	85.0
36"		72.9	85.0	72.9	85.0	85.0	85.0
42"		65.5	79.9	65.5	85.0	85.0	85.0
48"		60.2	72.3	60.2	85.0	85.0	85.0
24"	90"	85.0	85.0	85.0	85.0	85.0	85.0
30"		77.0	85.0	77.0	85.0	85.0	85.0
36"		66.8	72.9	66.8	85.0	85.0	85.0
42"		59.8	64.1	59.8	85.0	85.0	85.0
48"		54.7	57.7	54.7	82.0	82.0	85.0
24"	96"	85.0	85.0	85.0	85.0	85.0	85.0
30"		70.3	70.3	71.3	85.0	85.0	85.0
36"		59.6	59.6	61.7	85.0	85.0	85.0
42"		52.2	52.2	55.0	81.9	82.5	85.0
48"		46.8	46.8	50.1	73.2	75.2	85.0
24"	102"	72.0	72.0	80.2	85.0	85.0	85.0
30"		58.3	58.3	66.4	85.0	85.0	85.0
36"		49.4	49.4	57.3	82.8	85.0	85.0
42"		43.1	43.1	50.9	72.0	76.4	85.0
48"		38.6	38.6	46.3	64.2	69.4	85.0
24"	108"	60.5	60.5	75.2	85.0	85.0	85.0
30"		49.0	49.0	62.1	85.0	85.0	85.0
36"		41.4	41.4	53.5	73.5	80.2	85.0
42"		36.0	36.0	47.4	63.9	71.1	85.0
48"		32.2	32.2	43.0	56.8	64.5	79.2
24"	114"	51.4	51.4	70.8	85.0	85.0	85.0
30"		41.5	41.5	58.3	73.8	85.0	85.0
36"		35.0	35.0	50.1	62.2	75.2	85.0
42"		30.5	30.5	44.4	54.1	66.5	79.5
48"		27.1	27.1	40.1	48.2	60.2	70.6
24"	120"	44.0	44.0	66.8	78.1	85.0	85.0
30"		35.5	35.5	55.0	63.1	82.5	85.0
36"		29.9	29.9	47.2	53.1	70.8	82.5
42"		26.0	26.0	41.7	46.2	62.5	71.4
48"		23.1	23.1	37.6	41.0	56.4	63.3



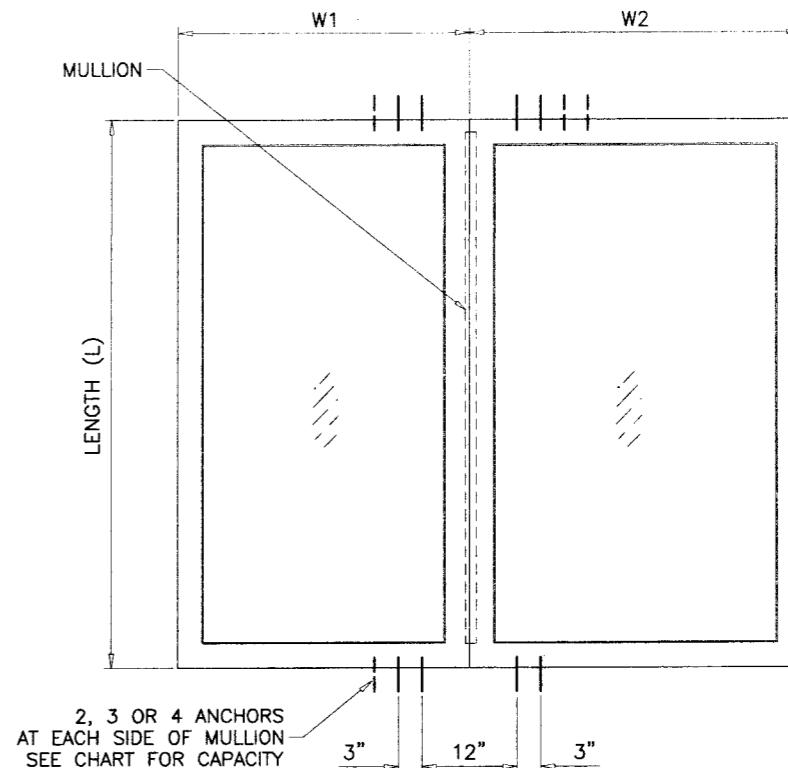
MULLION TYPE '1'



MULLION TYPE '2'



MULLION TYPE '3'



2, 3 OR 4 ANCHORS  
AT EACH SIDE OF MULLION  
SEE CHART FOR CAPACITY

TYPICAL ELEVATIONS  
SIDE BY SIDE WINDOWS

SIDE BY SIDE APPLIES TO TWO OR MORE WINDOWS

$$WIDTH (W) = \frac{W1 + W2}{2}$$

NOTES:

1. USE CHART ON THIS SHEET FOR SIDE BY SIDE CONNECTION CAPACITY OF WINDOW MULLION.
2. FOR FIXED WINDOW CAPACITY SEE SHEET 2 OF 7.
3. LOWER VALUES FROM STEPS 1 OR 2 WILL APPLY TO ENTIRE SYSTEM.

Engr. DR. HUMAYOON FAROOQ  
STRUCTURES  
FLA. PE # 16557  
C.A.N. 3538

FEB 12 2009

MARCH 18 2009  
08-1124.07  
Manuel Perez

**af c**  
**AL-FAROOQ CORPORATION**  
ENGINEERS & PRODUCT DEVELOPMENT  
1235 S.W. 87 AVE  
MIAMI, FLORIDA 33174  
TEL. (305) 264-8100 FAX. (305) 262-6978  
COMP-ANL\W08-68MNA

WOOD FRAME FIXED WINDOW (L.M.I.)  
**MONTAG WINDOWS & DOORS**  
215 HEMBREE PARK DRIVE, SUITE 100  
ROSWELL, GA 30076  
TEL. (866) 562-1728 FAX. (866) 563-1728

no.	date	description
A	02.12.09	NAILS REV.

date: 07-19-08  
scale: 3/8" = 1"  
dr. by: HAMID  
chk. by:

drawing no.  
**W08-68**  
sheet 7 of 7