



**BUILDING CODE COMPLIANCE OFFICE (BCCO)
PRODUCT CONTROL DIVISION**

**MIAMI-DADE COUNTY, FLORIDA
METRO-DADE FLAGLER BUILDING
140 WEST FLAGLER STREET, SUITE 1107
MIAMI, FLORIDA 33130-1563
(305) 375-2902 FAX (305) 372-6339**

NOTICE OF ACCEPTANCE (NOA)

www.miamidade.gov/buildingcode

**Montag Windows & Doors, LLC
215 Hembree Park Drive, Suite 100
Roswell, GA 30076**

SCOPE:

This NOA is being issued under the applicable rules and regulations governing the use of construction materials. The documentation submitted has been reviewed by Miami-Dade County Product Control Division and accepted by the Board of Rules and Appeals (BORA) to be used in Miami-Dade County and other areas where allowed by the Authority Having Jurisdiction (AHJ).

This NOA shall not be valid after the expiration date stated below. The Miami-Dade County Product Control Division (In Miami-Dade County) and/or the AHJ (in areas other than Miami-Dade County) reserve the right to have this product or material tested for quality assurance purposes. If this product or material fails to perform in the accepted manner, the manufacturer will incur the expense of such testing and the AHJ may immediately revoke, modify, or suspend the use of such product or material within their jurisdiction. BORA reserves the right to revoke this acceptance, if it is determined by Miami-Dade County Product Control Division that this product or material fails to meet the requirements of the applicable building code.

This product is approved as described herein, and has been designed to comply with the Florida Building Code, including the High Velocity Hurricane Zone.

DESCRIPTION: Series "White Meranti" 10'0" Outswing Glazed Wood French Door – L.M.I.

APPROVAL DOCUMENT: Drawing No. **W08-74**, titled "Series Wood Frame outswing French Door (L.M.I.)", sheets 1 through 13 of 13, dated 08/13/08 with revision "A" dated 06/26/09, prepared by Al-Farooq Corporation, dated 07/13/09, signed and sealed by Arshad Viqar, P. E., bearing the Miami-Dade County Product Control Approval stamp with the Notice of Acceptance number and Approval date by the Miami-Dade County Product Control Division.

MISSILE IMPACT RATING: Large and Small Missile Impact Resistant

LABELING: Each unit shall bear a permanent label with the manufacturer's name or logo, city, state and following statement: "Miami-Dade County Product Control Approved", unless otherwise noted herein.

RENEWAL of this NOA shall be considered after a renewal application has been filed and there has been no change in the applicable building code negatively affecting the performance of this product.

TERMINATION of this NOA will occur after the expiration date or if there has been a revision or change in the materials, use, and/or manufacture of the product or process. Misuse of this NOA as an endorsement of any product, for sales, advertising or any other purposes shall automatically terminate this NOA. Failure to comply with any section of this NOA shall be cause for termination and removal of NOA.

ADVERTISEMENT: The NOA number preceded by the words Miami-Dade County, Florida, and followed by the expiration date may be displayed in advertising literature. If any portion of the NOA is displayed, then it shall be done in its entirety.

INSPECTION: A copy of this entire NOA shall be provided to the user by the manufacturer or its distributors and shall be available for inspection at the job site at the request of the Building Official. This NOA consists of this page 1 and evidence pages E-1 and E-2, as well as approval document mentioned above.

The submitted documentation was reviewed by **Jaime D. Gascon, P. E.**



*J. Gascon
7/29/09*

**NOA No. 09-0326.02
Expiration Date: August 19, 2014
Approval Date: August 19, 2009
Page 1**

Montag Windows & Doors, LLC

NOTICE OF ACCEPTANCE: EVIDENCE SUBMITTED

A. DRAWINGS

1. Manufacturer's die drawings and sections.
2. Drawing No **W08-74**, titled "Series Wood Frame outswing French Door (L.M.I.)", sheets 1 through 13 of 13, dated 08/13/08 with revision "A" dated 06/26/09, prepared by Al-Farooq Corporation, dated 07/13/09, signed and sealed by Arshad Viqar, P. E.

B. TESTS

1. Test reports on: 1) Air Infiltration Test, per FBC, TAS 202-94
2) Uniform Static Air Pressure Test, Loading per FBC TAS 202-94
3) Water Resistance Test, per FBC, TAS 202-94
4) Large Missile Impact Test per FBC, TAS 201-94
5) Cyclic Wind Pressure Loading per FBC, TAS 203-94
6) Forced Entry Test, per FBC 2411 3.2.1, TAS 202-94
along with marked-up drawings and installation diagram of a wood outswing door, prepared by American Test Lab of South Florida, Inc., Test Report No. **ATL 1010.02-07**, dated 11/18/08, signed and sealed by William R. Mehner, P. E. and Henry Hattem, P. E.

C. CALCULATIONS

1. Anchor verification calculations and structural analysis, complying with FBC-2007, dated 10/17/08, prepared by Al-Farooq Corporation, dated 05/24/09, signed and sealed by Arshad Viqar, P. E.
Complies with ASTM E1300-02/ 04

D. QUALITY ASSURANCE

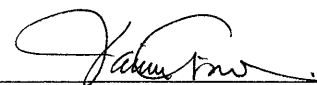
1. Miami Dade Building Code Compliance Office (BCCO).

E. MATERIAL CERTIFICATIONS

1. Notice of Acceptance No. **09-0312.03** issued to E.I. DuPont DeNemours & Co., Inc. for their "**DuPont Sentry Glass® Interlayer**" dated 05/13/09, expiring on 01/14/12.

E. STATEMENTS

1. Statement letter of conformance, prepared by Al-Farooq Corporation, dated July 09, 2009, signed and sealed by Arshad Viqar, P. E.
2. Statement letter of no financial interest, prepared by Al-Farooq Corporation, dated July 09, 2009, signed and sealed by Arshad Viqar, P. E.
3. Statement letter of changes, prepared by Al-Farooq Corporation, dated July 09, 2009, signed and sealed by Arshad Viqar, P. E.



Jaime D. Gascon, P. E.
Chief, Product Control Division
NOA No. 09-0326.02

Expiration Date: August 19, 2014
Approval Date: August 19, 2009

Montag Windows & Doors, LLC

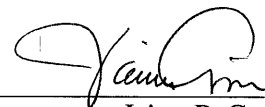
NOTICE OF ACCEPTANCE: EVIDENCE SUBMITTED

E. STATEMENTS (CONTINUED)

4. Laboratory compliance letter for Test Report No. **ATL 1010.02-07**, issued by American Test Lab of South Florida, Inc., dated November 18, 2008, signed and sealed by William R. Mehner, P. E. and Henry Hattem, P. E.
5. Laboratory addendum letter for Test Report no. **ATL 1010.02-07**, issued by American Test Lab of South Florida, Inc., dated April 08, 2009, signed and sealed by William R. Mehner, P. E. and Henry Hattem, P. E.
6. Laboratory addendum letter "A" for Test Report No. **ATL 1010.02-07**, issued by American Test Lab of South Florida, Inc., dated May 07, 2009, signed and sealed by William R. Mehner, P. E. and Henry Hattem, P. E.
7. Laboratory addendum letter "B" for Test Report no. **ATL 1010.02-07**, issued by American Test Lab of South Florida, Inc., dated April 08, 2009, signed and sealed by William R. Mehner, P. E. and Henry Hattem, P. E.
8. Distributor Agreement document in conformance to BCCO guidelines dated April 28, 2009 signed by Gerhard Lang, C.E.O. and Mitch Lewandowski, Managing Director.

G. OTHERS

1. None.

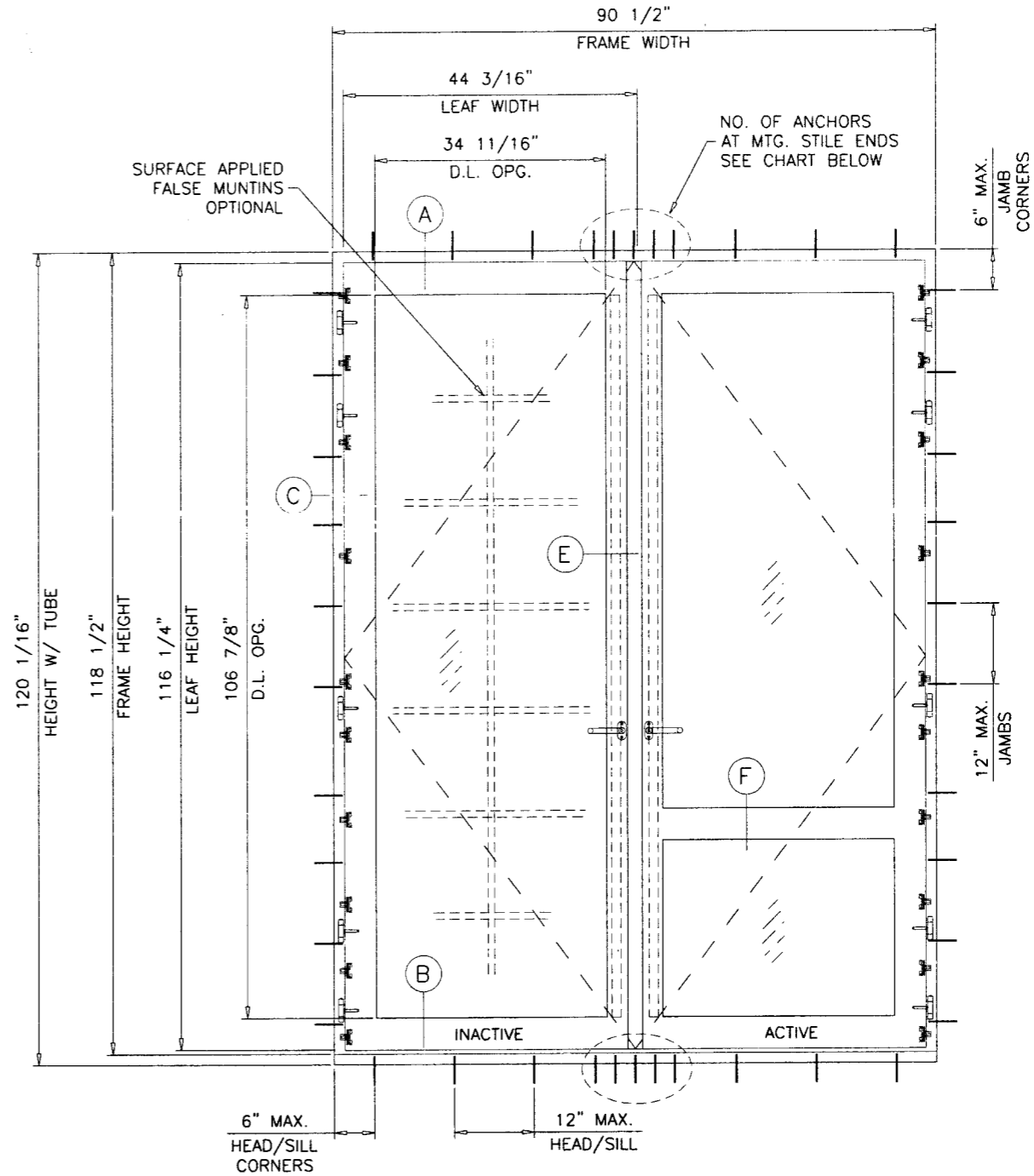
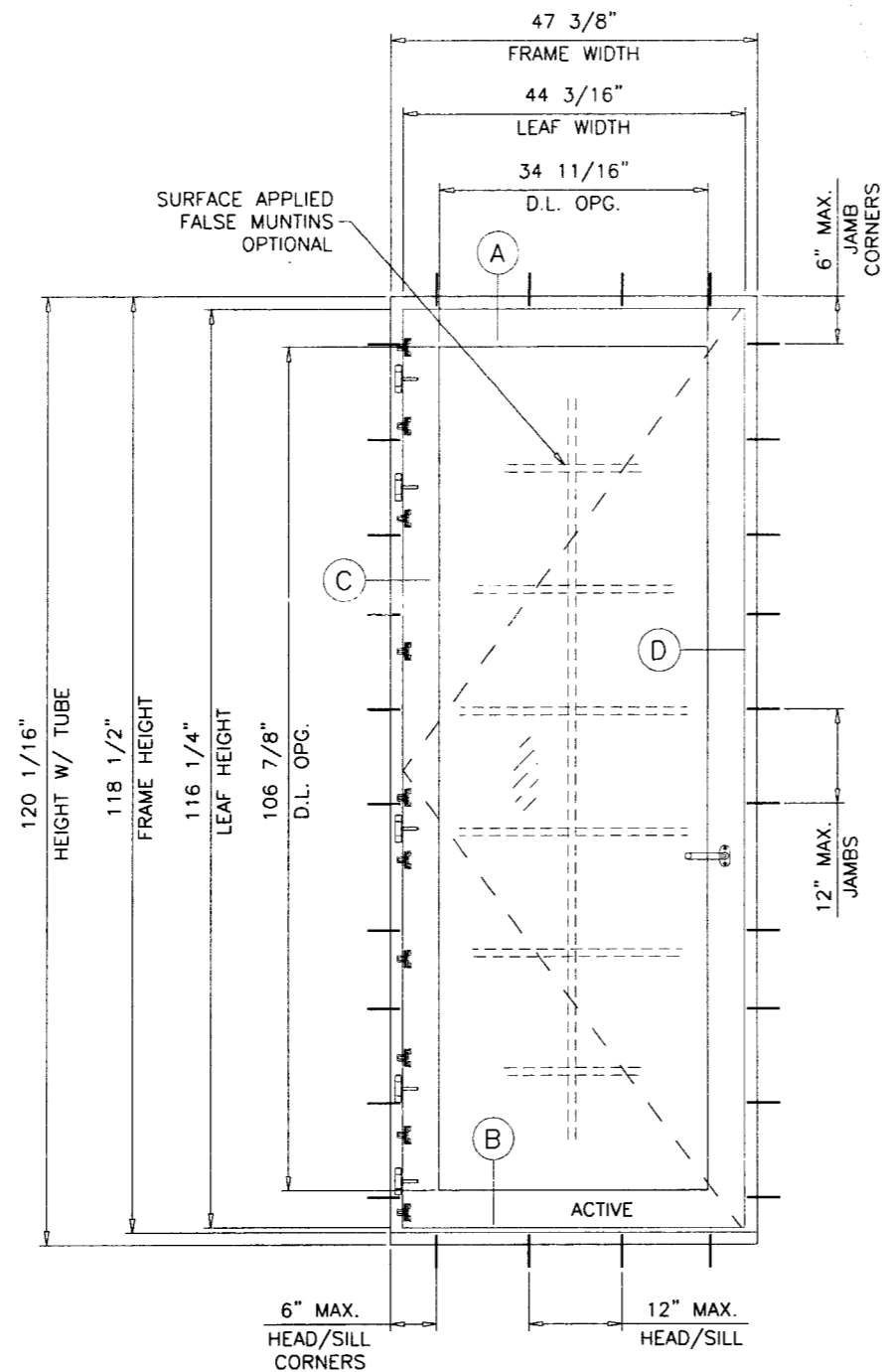


Jaime D. Gascon, P. E.
Chief, Product Control Division

NOA No. 09-0326.02

Expiration Date: August 19, 2014

Approval Date: August 19, 2009



ALL WOOD IN CONTACT WITH MASONRY AND CONCRETE ETC. WILL BE TREATED USING ONE COAT OF 'CETOL® 1' AND TWO COATS OF 'CETOL® 23 PLUS' WOOD PRESERVATIVE.

WOOD FRAME OUTSWING FRENCH DOOR

DESIGN LOAD RATING FOR THESE DOORS TO BE AS PER CHARTS SHOWN ON SHEET 2.

APPROVAL APPLIES TO SINGLE (X) AND DOUBLE (XX) LEAF DOORS. ALSO SINGLE AND DOUBLE DOORS IN COMBINATION WITH SIDELITES USING MIAMI-DADE COUNTY APPROVED MULLIONS IN BETWEEN. ALSO SINGLE AND DOUBLE DOORS WITH OR WITHOUT SIDELITES IN COMBINATION WITH TRANSOMS USING MIAMI-DADE COUNTY APPROVED MULLION IN BETWEEN. LOWER DESIGN PRESSURES FROM DOOR, SIDELITE OR MULLION APPROVAL WILL APPLY TO ENTIRE SYSTEM.

THIS PRODUCT HAS BEEN DESIGNED AND TESTED TO COMPLY WITH THE REQUIREMENTS OF THE FLORIDA BUILDING CODE 2007 EDITION INCLUDING HIGH VELOCITY HURRICANE ZONE (HVHZ).

WOOD BUCKS BY OTHERS, MUST BE ANCHORED PROPERLY TO TRANSFER LOADS TO THE STRUCTURE.

ANCHORS SHALL BE AS LISTED, SPACED AS SHOWN ON DETAILS, ANCHORS EMBEDMENT TO BASE MATERIAL SHALL BE BEYOND WALL DRESSING OR STUCCO.

ANCHORING OR LOADING CONDITIONS NOT SHOWN IN THESE DETAILS ARE NOT PART OF THIS APPROVAL.

A LOAD DURATION INCREASE IS USED IN DESIGN OF ANCHORS INTO WOOD ONLY.

MATERIALS INCLUDING BUT NOT LIMITED TO STEEL/METAL SCREWS, THAT COME INTO CONTACT WITH OTHER DISSIMILAR MATERIALS SHALL MEET THE REQUIREMENTS OF 2007 FLORIDA BLDG. CODE SECTION 2003.8.4.

TYPICAL ELEVATIONS
EXTERIOR VIEW

NUMBER OF ANCHORS AT MTG. STILE ENDS		
MAXIMUM DOOR HEIGHT	DIRECT MOUNT	CLIP MOUNT
10 FT.	4	5

THESE DOORS ARE RATED FOR LARGE & SMALL MISSILE IMPACT. SHUTTERS ARE NOT REQUIRED.

Engr: ARSHAD VIQAR
CIVIL
FLA. PE # 38863
C.A.N. 3538
[Signature]
JUL 13 2009

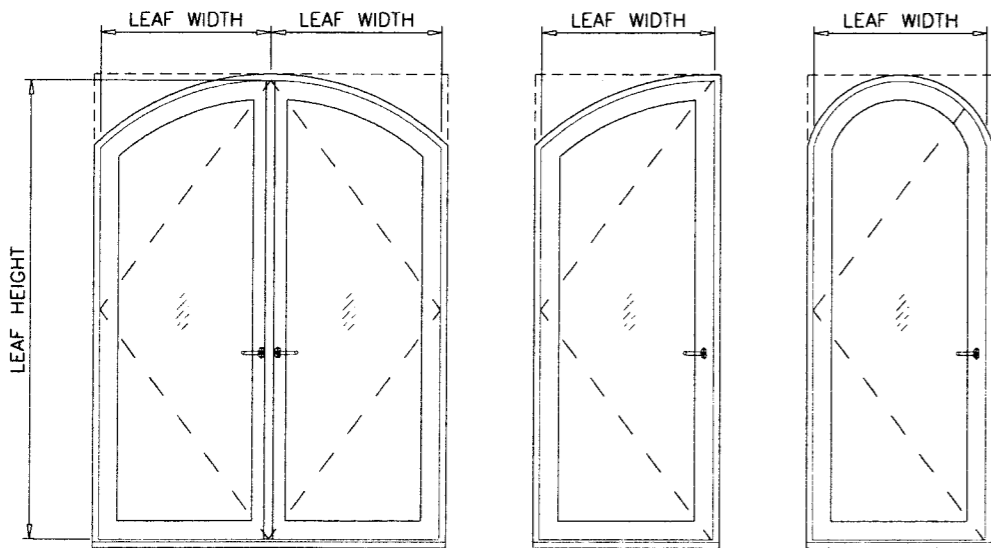
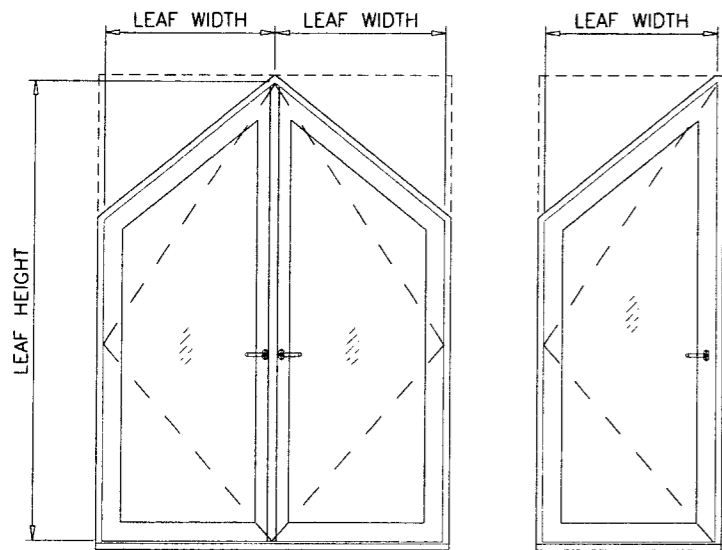
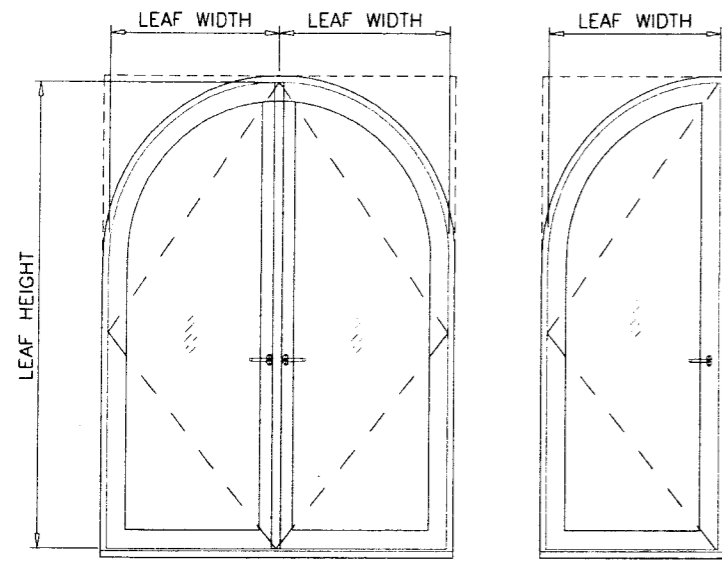
Approved as complying with the Florida Building Code
Date: AUGUST 19, 2009
MOAA 09-0326.02
Miami-Dade Product Control
By: *[Signature]*

af c
AL-FAROOQ CORPORATION
ENGINEERS & PRODUCT DEVELOPMENT
1235 S.W. 87 AVE
MIAMI, FLORIDA 33174
TEL. (305) 264-8100 FAX. (305) 262-6978
COMP-ANL\W08-74MNA

WOOD FRAME OUTSWING FRENCH DOOR (L.M.I.)
MONTAG WINDOWS & DOORS
215 HEMBREE PARK DRIVE, SUITE 100
ROSWELL, GA 30076
TEL. (866) 562-1728 FAX. (866) 563-1728

no	date	description	REV. PER	BCCO COMMENTS
A	06.26.09			

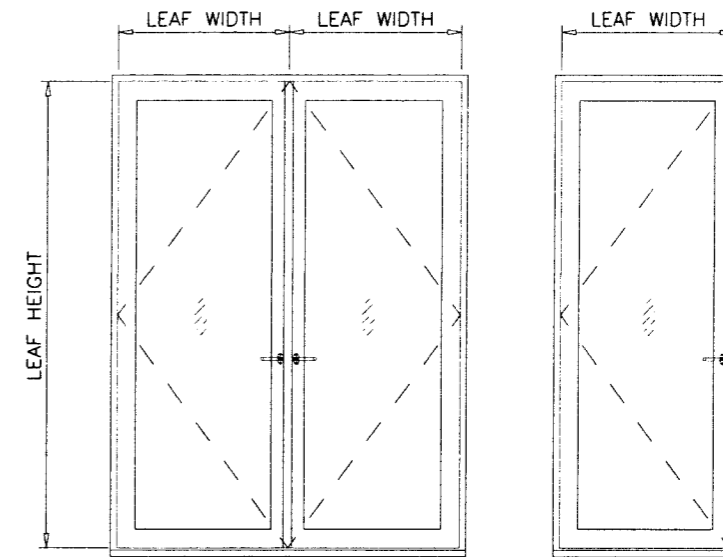
revisions:
date: 08-13-08
scale: 1/2"=1'-0"
dr. by: HAMID
chk. by:
drawing no. **W08-74**
sheet 1 of 13



(XX)

(X)

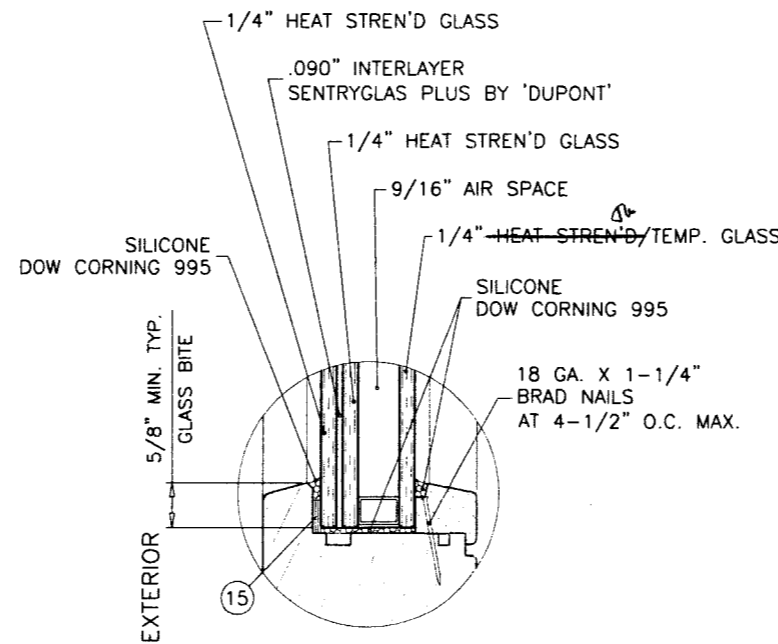
DESIGN LOAD CAPACITY - PSF ARCH TOP DOORS					
NOMINAL DIMS.				INSULATING LAMINATED GLASS	
LEAF WIDTH INCHES	LEAF HEIGHT INCHES	FRAME HEIGHT W/O SILL TUBE INCHES	FRAME HEIGHT W/ SILL TUBE INCHES	EXT.(+)	INT.(-)
36	80	82-1/2	84	65.0	85.0
	86	88-1/2	90	65.0	85.0
	92	94-1/2	96	65.0	85.0
	104	106-1/2	108	65.0	85.0
	116	118-1/2	120	65.0	85.0
39	80	82-1/2	84	65.0	85.0
	86	88-1/2	90	65.0	85.0
	92	94-1/2	96	65.0	85.0
	104	106-1/2	108	65.0	85.0
	116	118-1/2	120	65.0	70.0
44	80	82-1/2	84	65.0	85.0
	86	88-1/2	90	65.0	85.0
	92	94-1/2	96	65.0	85.0
	104	106-1/2	108	65.0	85.0
	116	118-1/2	120	65.0	70.0



(XX)

(X)

DESIGN LOAD CAPACITY - PSF RECTANGULAR DOORS					
NOMINAL DIMS.				INSULATING LAMINATED GLASS	
LEAF WIDTH INCHES	LEAF HEIGHT INCHES	FRAME HEIGHT W/O SILL TUBE INCHES	FRAME HEIGHT W/ SILL TUBE INCHES	EXT.(+)	INT.(-)
36	80	82-1/2	84	65.0	78.0
	86	88-1/2	90	65.0	78.0
	92	94-1/2	96	65.0	78.0
	104	106-1/2	108	65.0	78.0
	116	118-1/2	120	65.0	78.0
39	80	82-1/2	84	65.0	78.0
	86	88-1/2	90	65.0	78.0
	92	94-1/2	96	65.0	78.0
	104	106-1/2	108	65.0	78.0
	116	118-1/2	120	65.0	78.0
44	80	82-1/2	84	65.0	78.0
	86	88-1/2	90	65.0	78.0
	92	94-1/2	96	65.0	78.0
	104	106-1/2	108	65.0	78.0
	116	118-1/2	120	65.0	78.0



GLAZING DETAIL

NOTE:
GLASS CAPACITIES ON THIS SHEET ARE
BASED ON ASTM E1300-02/04 (3 SEC. GUSTS)
AND FLORIDA BUILDING COMMISSION
DECLARATORY STATEMENT DCA05-DEC-219

ALLOWABLE LOADS FOR ALTERNATE SHAPES AS SHOWN ABOVE OR SIMILAR CAN BE VERIFIED BY INSCRIBING DOOR SHAPE WITHIN RECTANGLE AS SHOWN IN DOTTED LINES AND OBTAINING ALLOWABLE LOADS FROM THOSE SHAPES.

Engr: ARSHAD VICAR
CIVIL
FLA. PE # 38863
C.A.N. 3538
Arshad Vicar
JUL 13 2009

Approved as complying with the
Florida Building Code
Date AUGUST 19, 2009
NO. 09-0326-02
Miami Code Product Control
By *[Signature]*

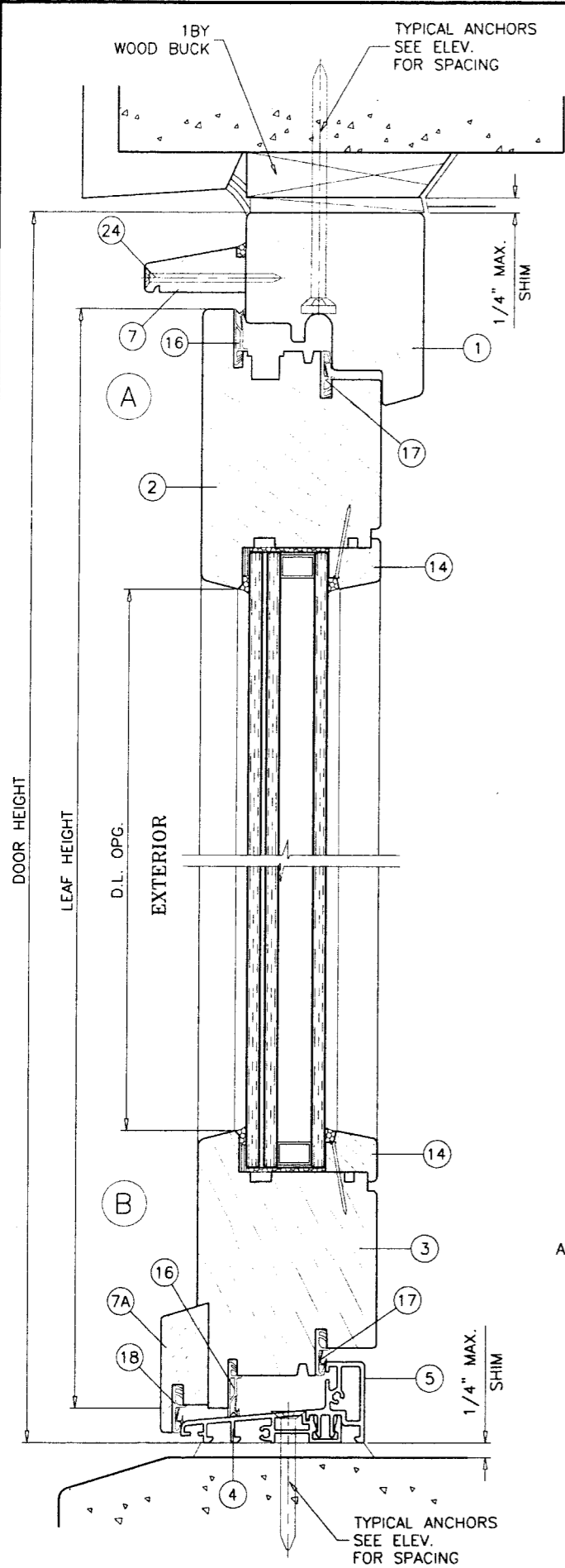
af c
AL-FAROOQ CORPORATION
ENGINEERS & PRODUCT DEVELOPMENT
1235 S.W. 87 AVE
MIAMI, FLORIDA 33174
TEL. (305) 264-8100 FAX. (305) 262-6978
COMP-ANL \ W08-74MNA

WOOD FRAME OUTSWING FRENCH DOOR (L.M.I.)
MONTAG WINDOWS & DOORS
215 HEMBREE PARK DRIVE, SUITE 100
ROSWELL, GA 30076
TEL. (866) 562-1728 FAX. (866) 563-1728

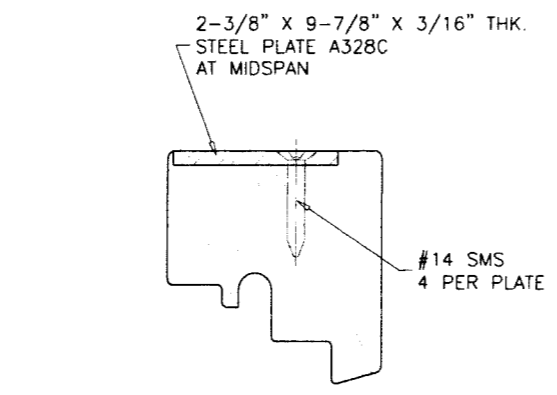
no	date	description
A	06.26.09	REV. PER BCC COMMENTS

date: 08-13-08
scale: 3/8" = 1"
dr. by: HAMID
chk. by:

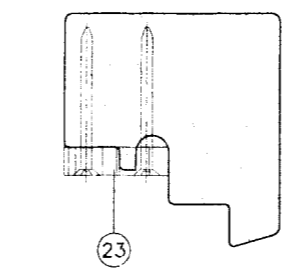
drawing no.
W08-74
sheet 2 of 13



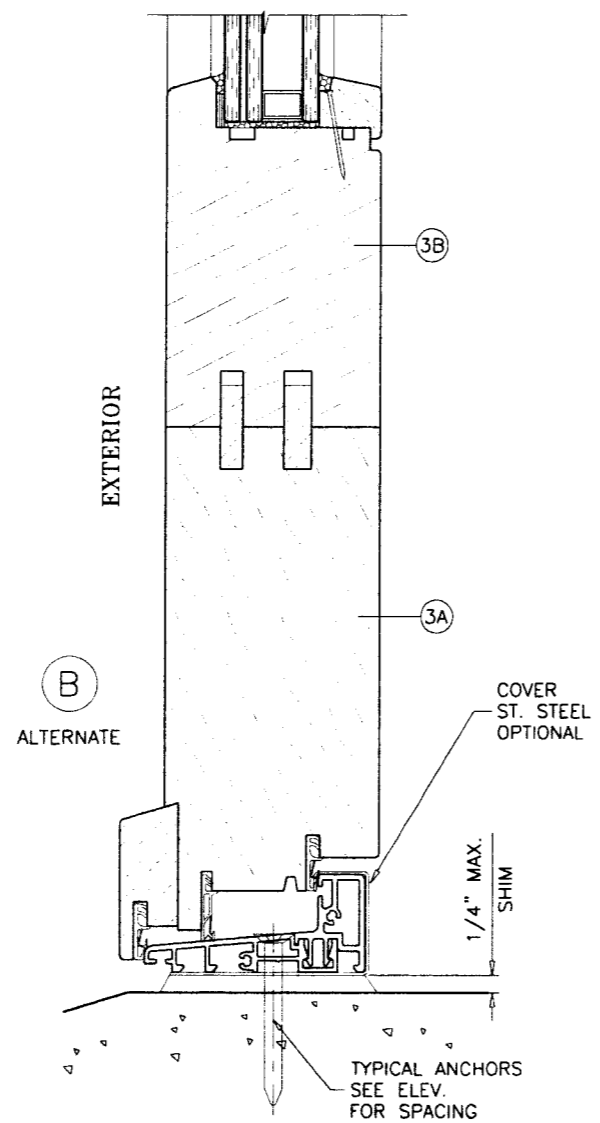
THRESHOLD W/O BASE TUBE



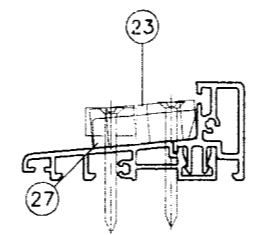
COUNTER PLATE
INSTALLATION AT HEAD
AT XX DOORS ONLY



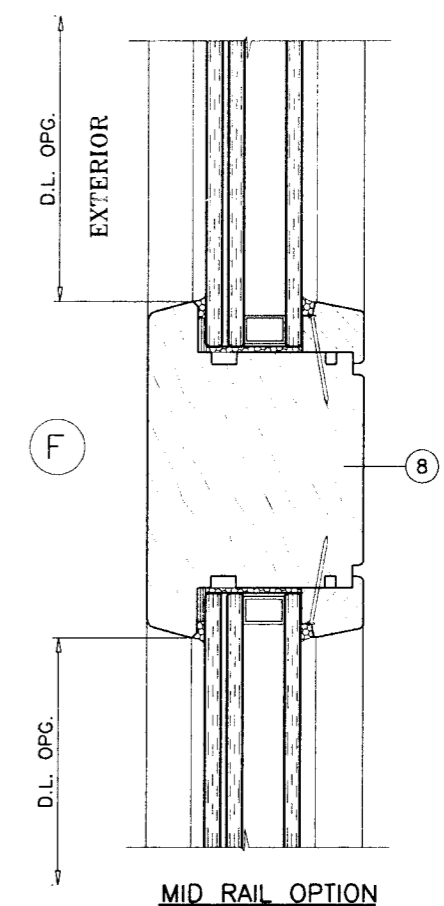
STRIKE PLATE
INSTALLATION AT HEAD



THRESHOLD W/O BASE TUBE



STRIKE PLATE
INSTALLATION AT SILL



Engr: ARSHAD VIGAR
CIVIL
FLA. PE # 38863
C.A.N. 3538

Ar

JUL 13 2009

Approved as copywriting with the
Florida Building Code
Date: **AUGUST 19, 2009**
Mark: **09-0326.02**
Product Control
Jan

afc
AL-FAROOQ CORPORATION
ENGINEERS & PRODUCT DEVELOPMENT
1235 S.W. 87 AVE
MIAMI, FLORIDA 33174
TEL. (305) 264-8100 FAX. (305) 262-6978
COMP - ANL \ W08-74MNA

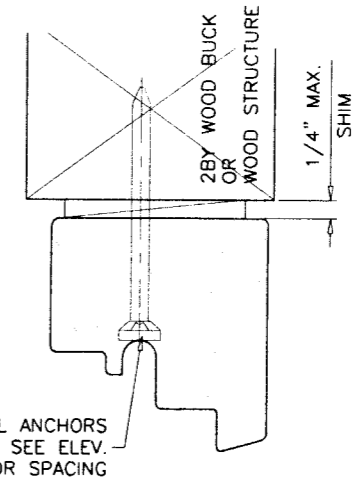
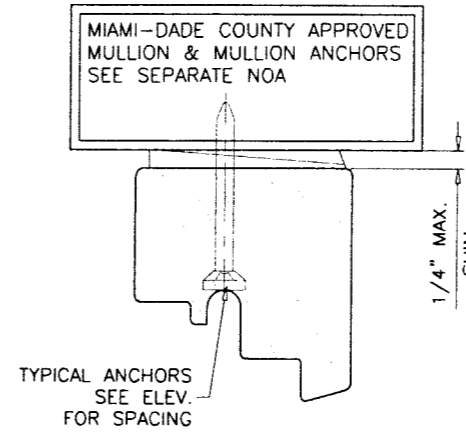
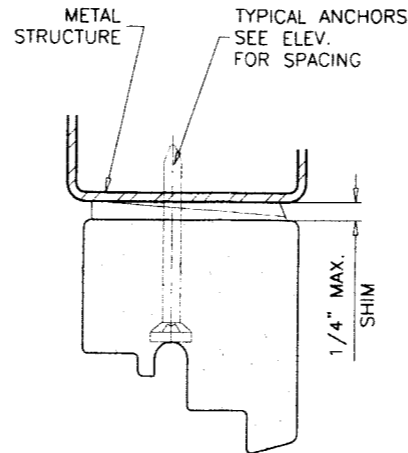
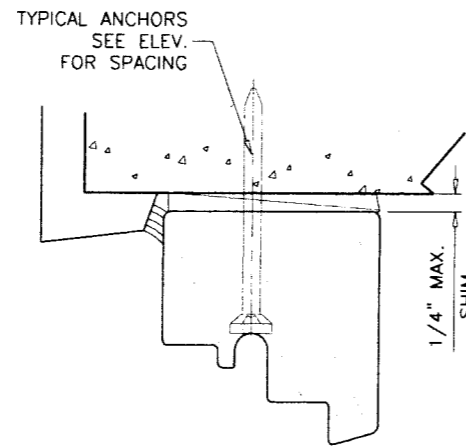
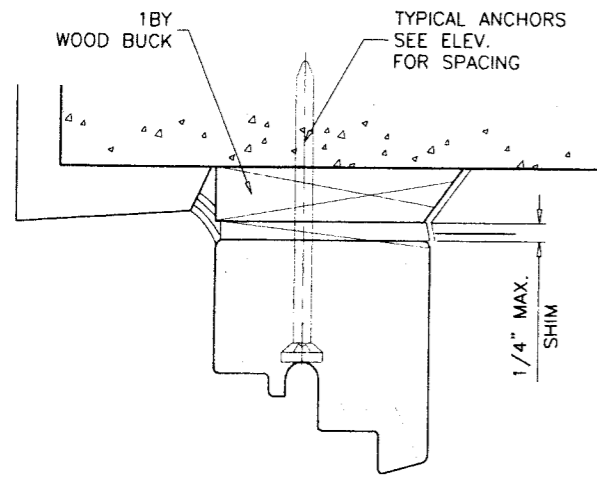
WOOD FRAME OUTSWING FRENCH DOOR (L.M.I.)
MONTAG WINDOWS & DOORS
215 HEMBREE PARK DRIVE, SUITE 100
ROSWELL, GA 30076
TEL. (866) 562-1728 FAX. (866) 563-1728

revisions:	no	date	by	description
	A	06.26.09	REV. PER BCCO COMMENTS	

date: 08-13-08
scale: 3/8" = 1"
dr. by: HAMID
chk. by:

drawing no.
W08-74

sheet 3 of 13



WOOD BUCKS AND METAL STRUCTURE NOT BY MONTAG MUST SUSTAIN LOADS IMPOSED BY GLAZING SYSTEM AND TRANSFER THEM TO THE BUILDING STRUCTURE.

TYPICAL ANCHORS: SEE ELEV. FOR SPACING

1/4" DIA. ULTRACON BY 'ELCO' (Fu=177 KSI, Fy=155 KSI)

INTO 2BY WOOD BUCKS OR WOOD STRUCTURES
1-1/2" MIN. PENETRATION INTO WOOD

THRU 1BY BUCKS INTO CONC. OR MASONRY
1-1/4" MIN. EMBED INTO CONC. OR MASONRY

DIRECTLY INTO CONC. OR MASONRY
1-1/4" MIN. EMBED INTO CONC. OR MASONRY

#14 SMS (GRADE 2 CRS)

1/4" TEKS OR SELF DRILLING SCREWS (GRADE 5 CRS)

INTO MIAMI-DADE COUNTY APPROVED MULLIONS (MIN. THK. = .090")

INTO METAL STRUCTURES

STEEL : 12 GA. MIN. (Fy = 36 KSI MIN.)

ALUMINUM : 1/8" THK. MIN. (6063-T5 MIN.)

(STEEL IN CONTACT WITH ALUMINUM TO BE PLATED OR PAINTED)

TYPICAL EDGE DISTANCE

INTO CONCRETE AND MASONRY = 2-1/2" MIN.

INTO WOOD STRUCTURE = 1" MIN.

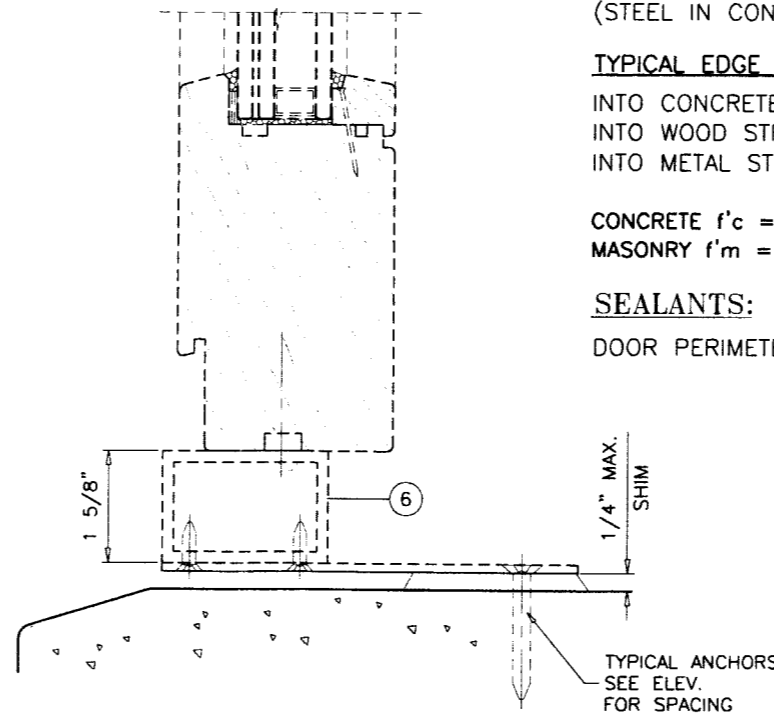
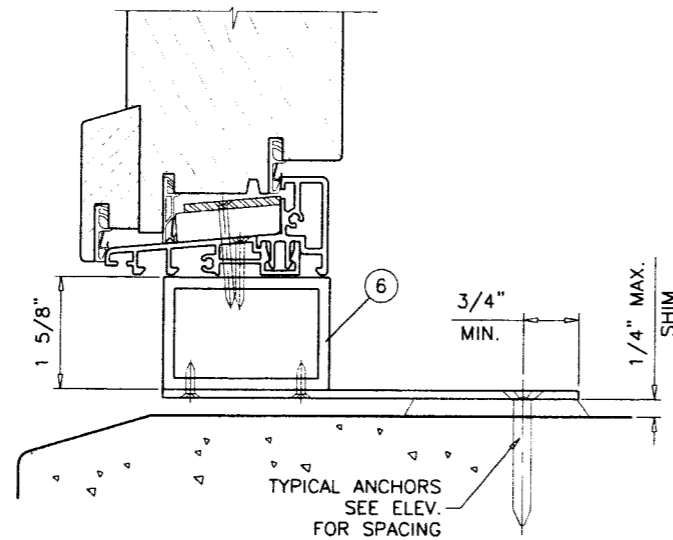
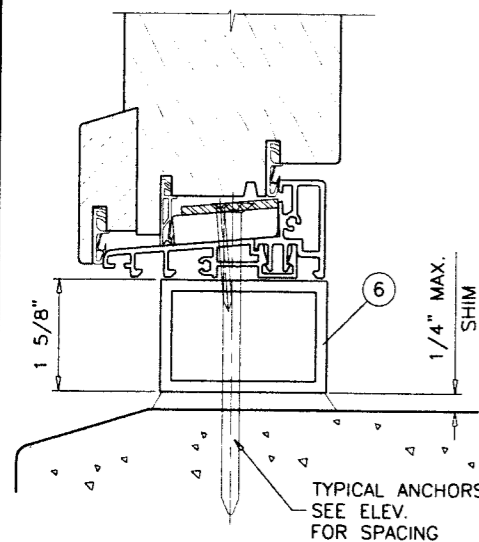
INTO METAL STRUCTURE = 3/4" MIN.

CONCRETE f'c = 3000 PSI MIN.

MASONRY f'm = 1500 PSI MIN.

SEALANTS:

DOOR PERIMETER SEALED WITH SILICONE SEALANT.



SIDELITE WDW. WITH BASE TUBE AND STEEL STRAP
SEE SEPARATE NOA FOR SIZES AND LOAD CAPACITY

Engr: ARSHAD VIQAR
CIVIL
FLA. PE # 38863
C.A.N. 3538

JUL 13 2009

Approved as complying with the
Florida Building Code
Date **AUGUST 19, 2009**
NOA# **09-0328.02**
Miami Dade Product Control
Division
By

af c
AL-FAROOQ CORPORATION
ENGINEERS & PRODUCT DEVELOPMENT
1235 S.W. 87 AVE
MIAMI, FLORIDA 33174
TEL. (305) 264-8100 FAX. (305) 262-6978
COMP-ANL\W08-74MNA

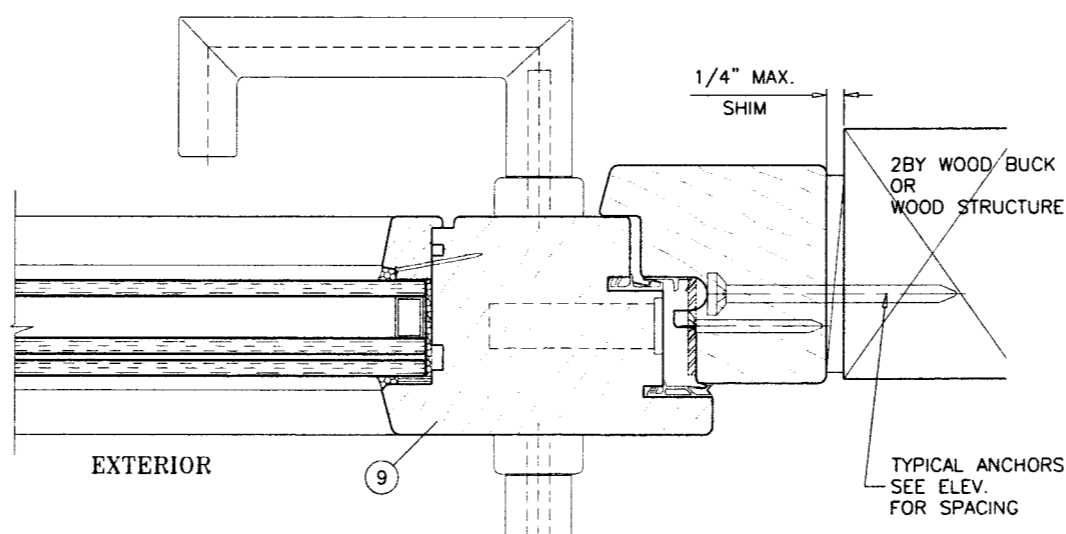
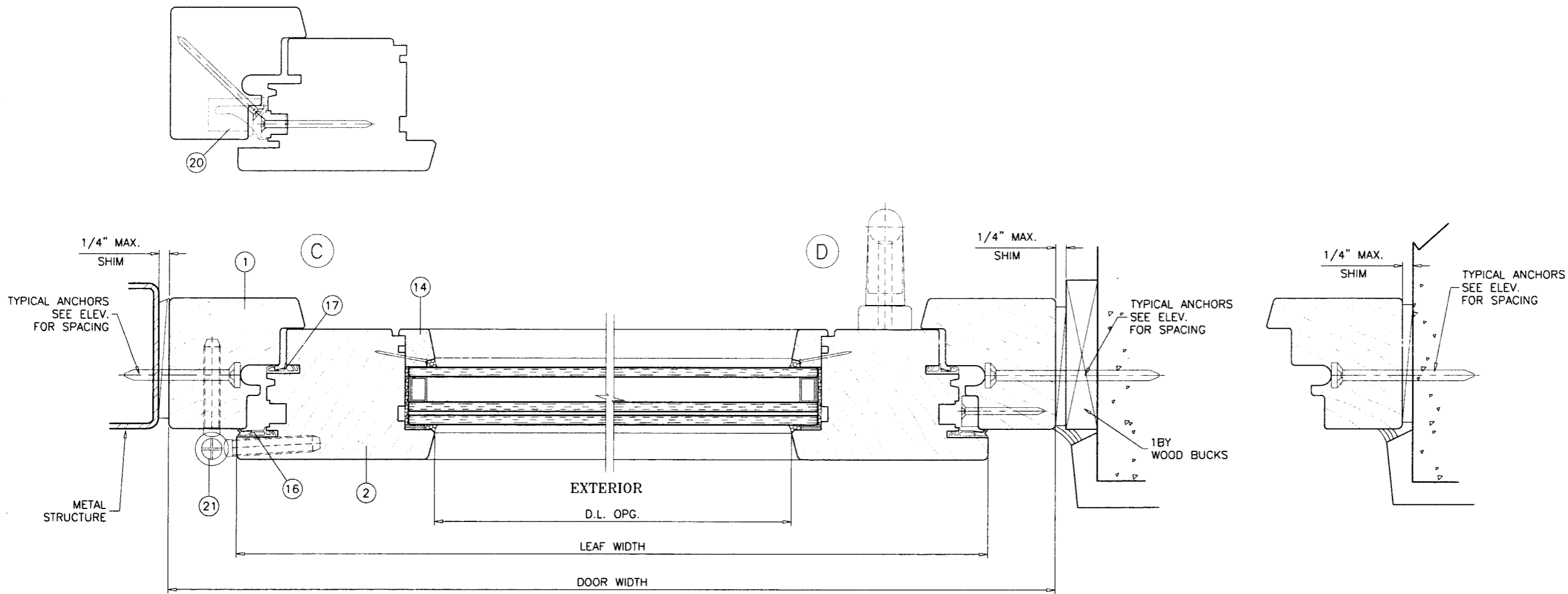
WOOD FRAME OUTSWING FRENCH DOOR (L.M.I.)
MONTAG WINDOWS & DOORS
215 HEMBREE PARK DRIVE, SUITE 100
ROSWELL, GA 30076
TEL. (866) 562-1728 FAX. (866) 563-1728

no.	date	description
A	06.26.09	REV. PER BCCO COMMENTS

date: 08-13-08
scale: 3/8" = 1"
dr. by: HAMID
chk. by:

drawing no.
W08-74

sheet 4 of 13



Engr. ARSHAD VIQAR
 CIVIL
 FLA. PE # 38863
 C.A.N. 3538

Arshad Viqar

JUL 13 2009

Approved as complying with the
 Florida Building Code
 Date **AUGUST 19, 2009**
 NO. **89-0326.02**
 Miami Dade Product Control
 By *[Signature]*

af c
AL-FAROOQ CORPORATION
 ENGINEERS & PRODUCT DEVELOPMENT
 1235 S.W. 87 AVE
 MIAMI, FLORIDA 33174
 TEL. (305) 264-8100 FAX. (305) 262-6978
 COMP - ANL \ W08 - 74MNA

WOOD FRAME OUTSWING FRENCH DOOR (L.M.I.)
MONTAG WINDOWS & DOORS
 215 HEMBREE PARK DRIVE, SUITE 100
 ROSWELL, GA 30076
 TEL. (866) 562-1728 FAX. (866) 563-1728

revisions:

no.	date	by	description
A	06.26.09		REV PER BCCO COMMENTS

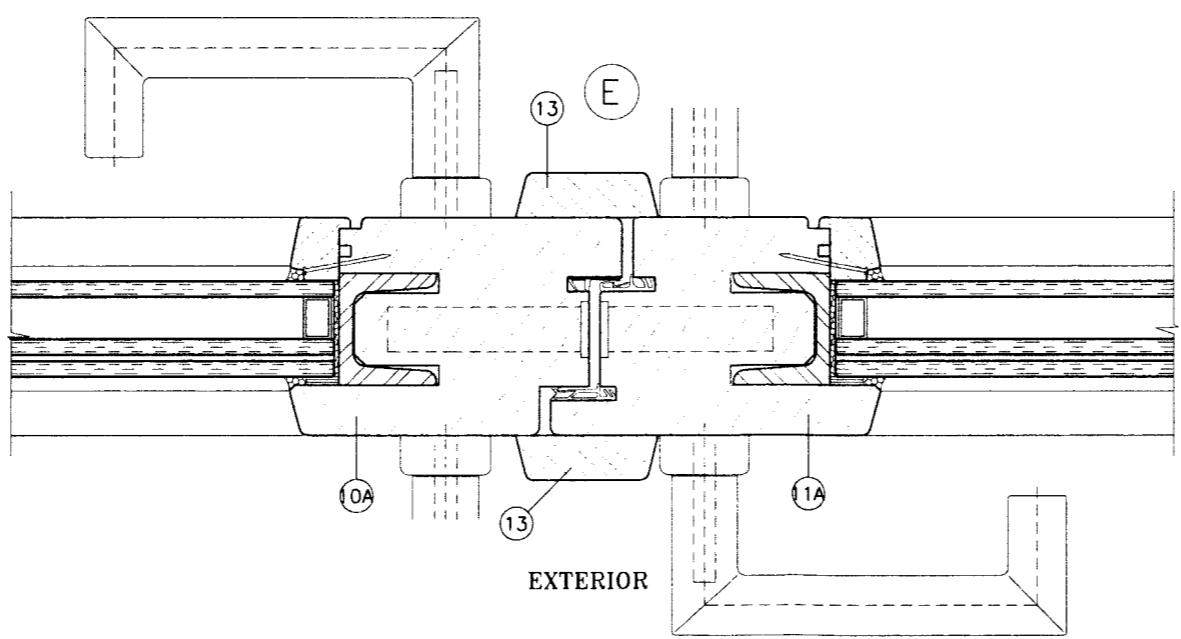
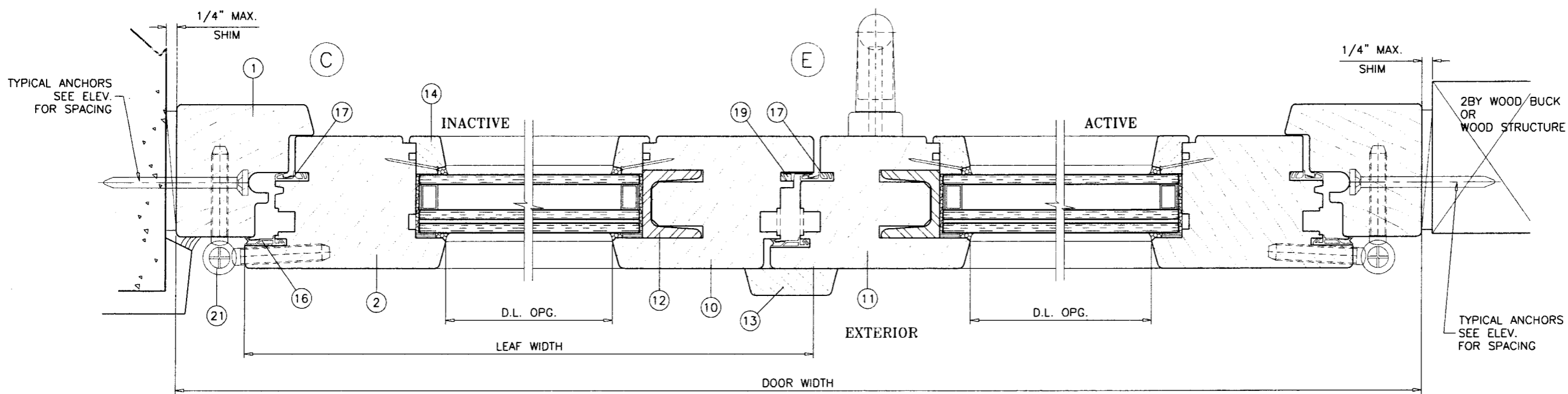
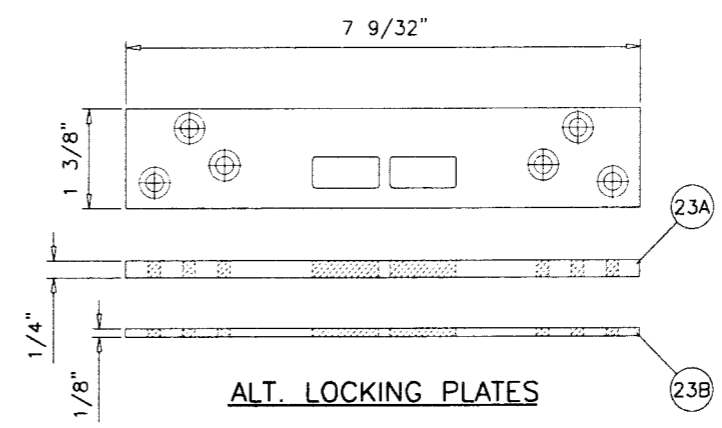
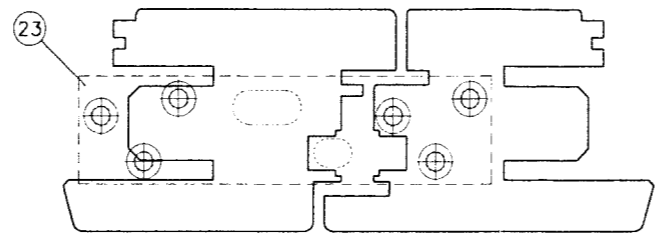
date: 08-13-08
 scale: 3/8" = 1"
 dr. by: HAMID
 chk. by:

drawing no.
W08-74
 sheet 5 of 13

no	date	by	description
A	06.26.09		REV. PER BCCO COMMENTS

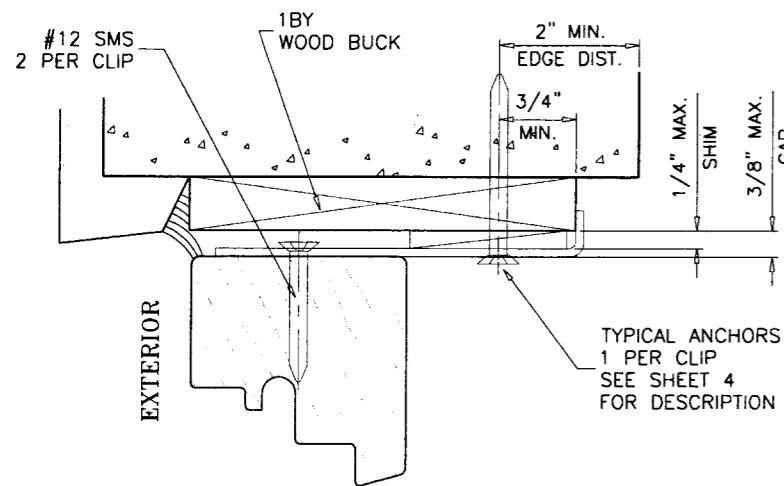
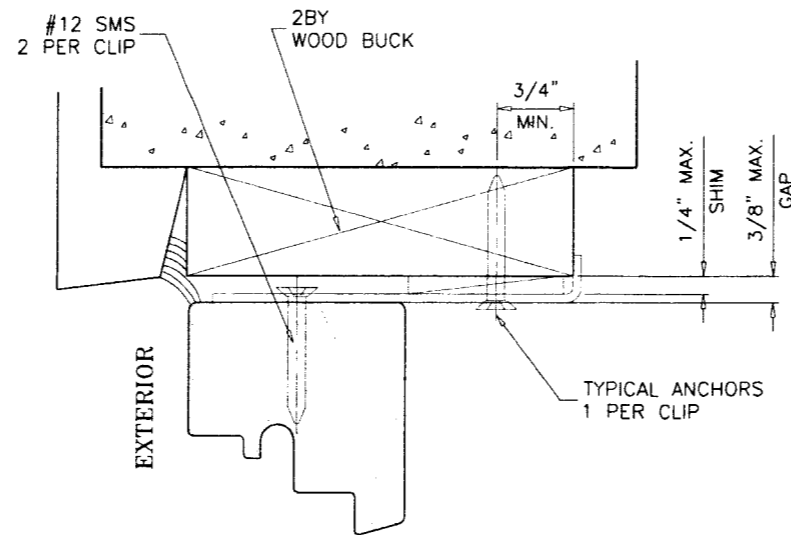
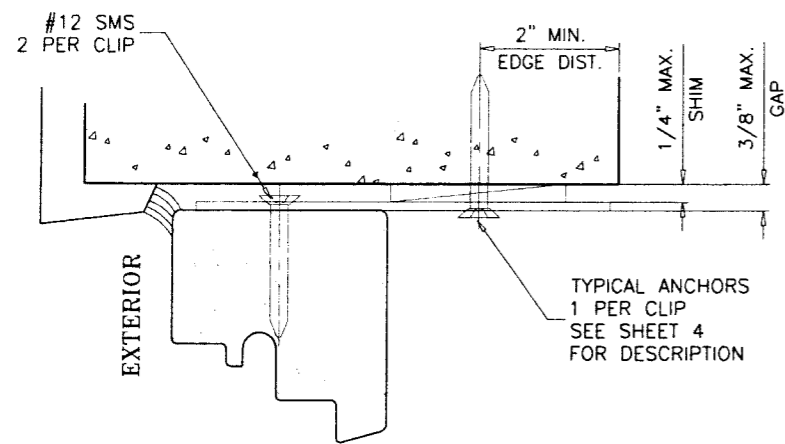
date: 08-13-08	scale: 3/8" = 1"	dr. by: HAMID	chk. by:
----------------	------------------	---------------	----------

drawing no. W08-74
sheet 6 of 13



Engr: ARSHAD VIQAR
 CIVIL
 FLA. PE # 38863
 C.A.N. 3538
 JUL 13 2009

Approved as complying with the Florida Building Code
 Date: **August 19, 2009**
 09-0326.02



TYPICAL ANCHORS: SEE ELEV. FOR SPACING

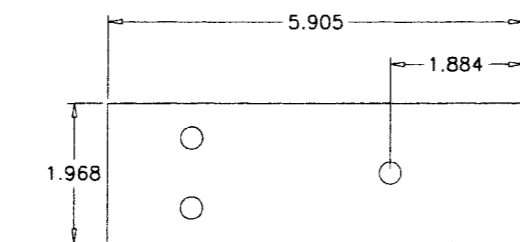
ANCHORS THRU STRAP CLIPS

#12 SMS

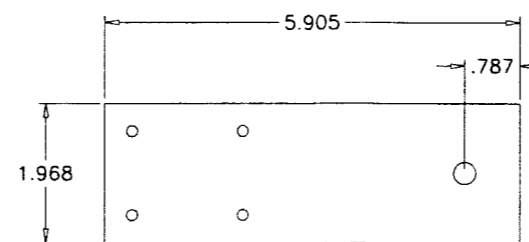
INTO 2BY WOOD BUCKS OR WOOD STRUCTURE
1-1/2" MIN. PENETRATION INTO WOOD

ANCHOR EDGE DISTANCES

INTO WOOD STRUCTURE = 3/4" MIN.



STRAP CLIP
GALV. STEEL
A328C



THRESHOLD CLIP
GALV. STEEL
A328C

Engr. ARSHAD VIQAR
CIVIL
FLA. PE # 38863
C.A.N. 3538

JUL 13 2009

Approved as complying with the
Florida Building Code
Date August 19, 2009
NOA# 09-0326.02
Miami Door Product Control
By [Signature]

af c
AL-FAROOQ CORPORATION
ENGINEERS & PRODUCT DEVELOPMENT
1235 S.W. 87 AVE
MIAMI, FLORIDA 33174
TEL. (305) 264-3100 FAX. (305) 262-6978
COMP - ANL\W08-74MNA

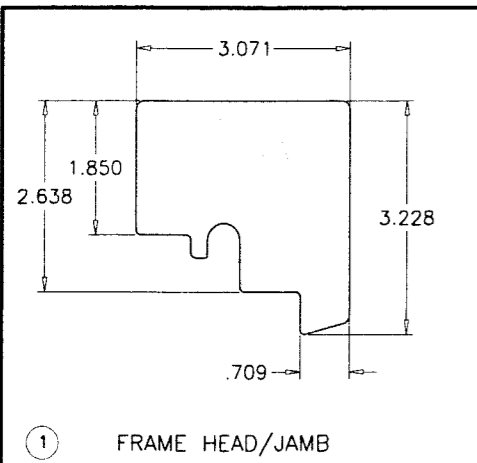
WOOD FRAME OUTSWING FRENCH DOOR (L.M.I.)
MONTAG WINDOWS & DOORS
215 HEMBREE PARK DRIVE, SUITE 100
ROSWELL, GA 30076
TEL. (866) 562-1728 FAX. (866) 563-1728

no.	date	by	description
A	06.26.09		REV. PER BCCO COMMENTS

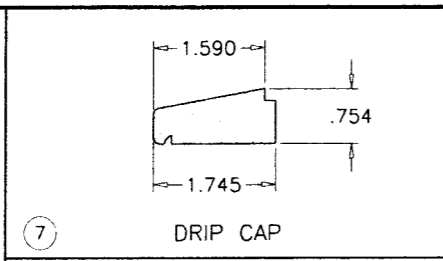
date: 08-13-08
scale: 3/8" = 1"
dr. by: HAMID
chk. by:

drawing no.
W08-74

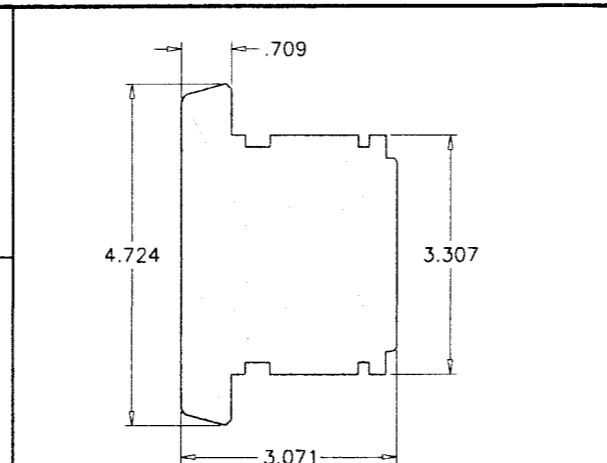
sheet 7 of 13



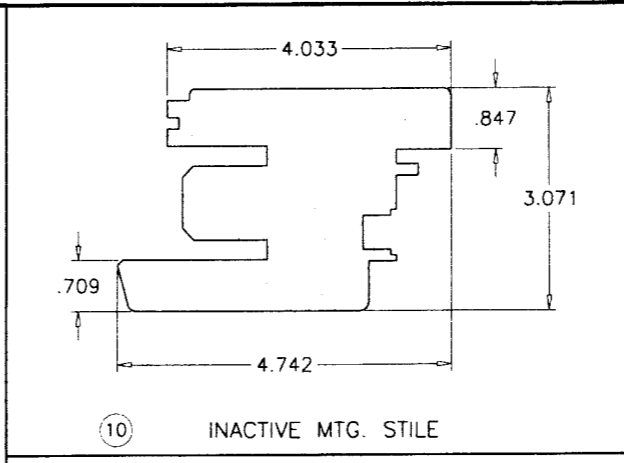
1 FRAME HEAD/JAMB



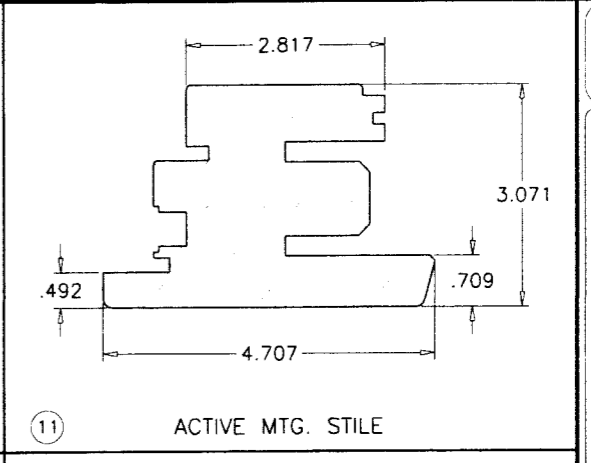
7 DRIP CAP



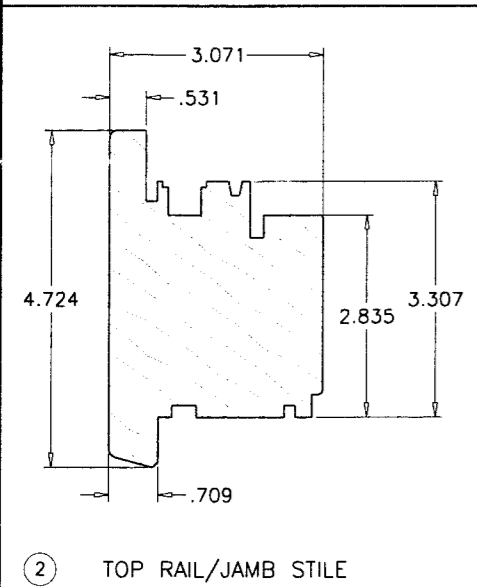
8 MID RAIL



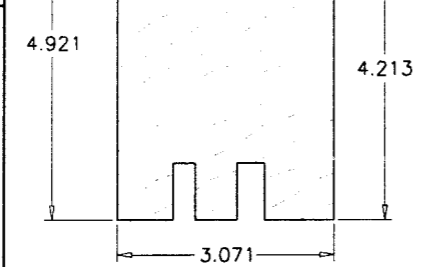
10 INACTIVE MTG. STILE



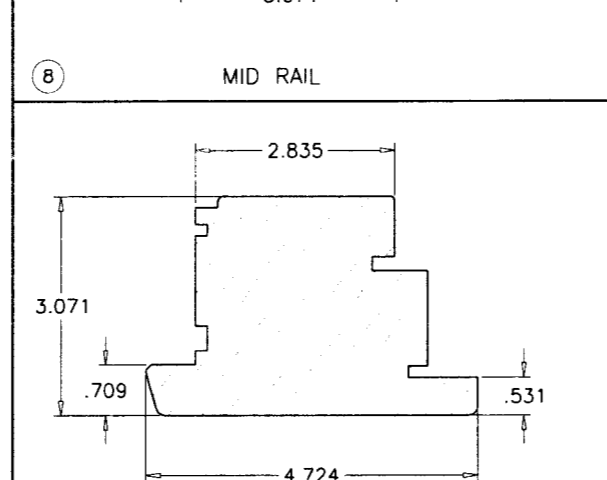
11 ACTIVE MTG. STILE



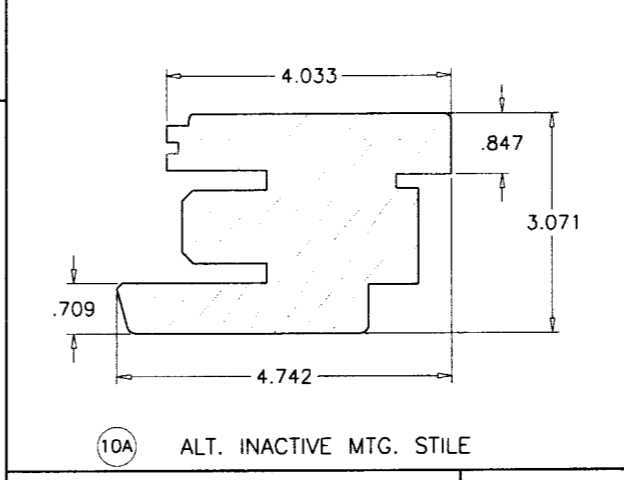
2 TOP RAIL/JAMB STILE



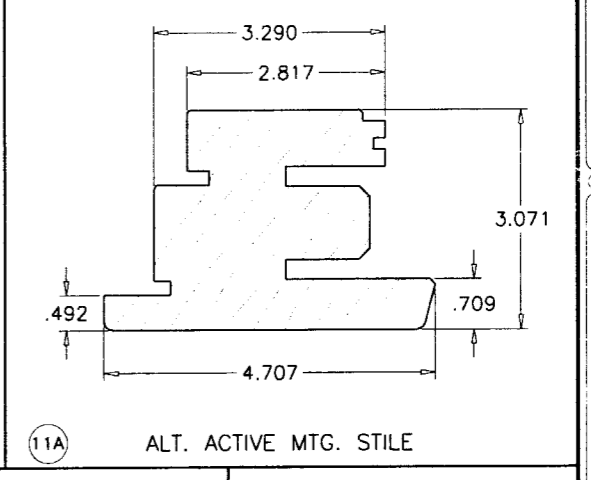
3B UPPER BOTTOM RAIL



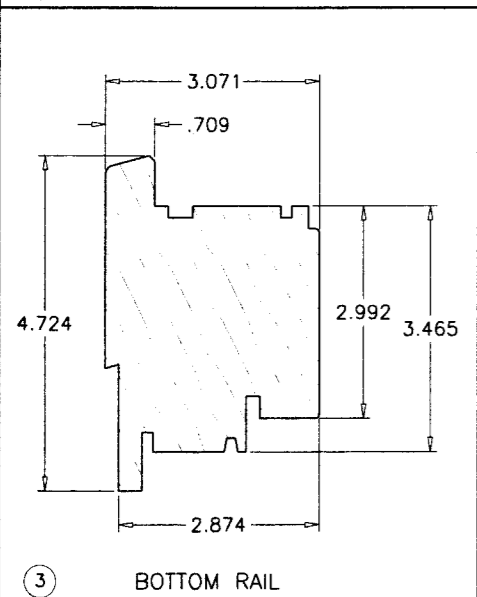
9 LOCK STILE



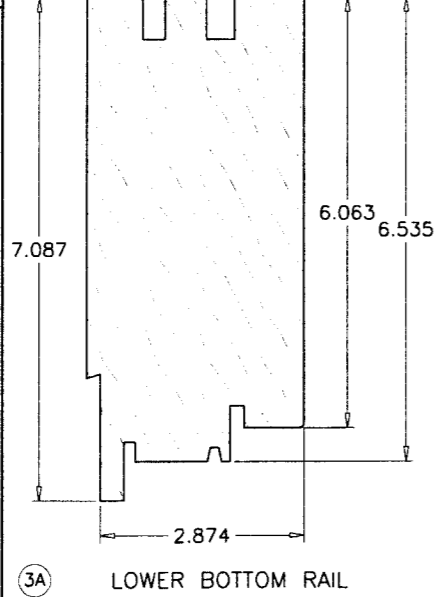
10A ALT. INACTIVE MTG. STILE



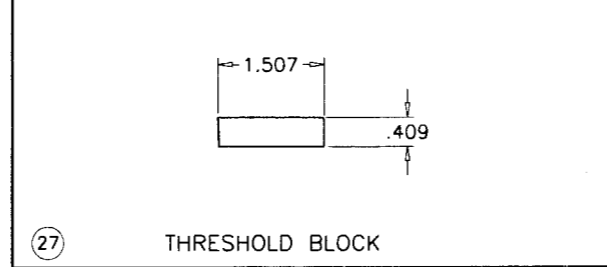
11A ALT. ACTIVE MTG. STILE



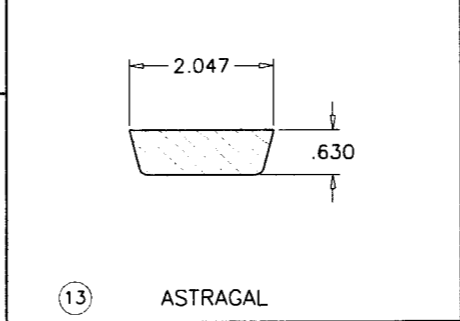
3 BOTTOM RAIL



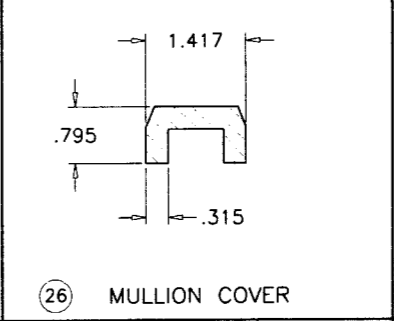
3A LOWER BOTTOM RAIL



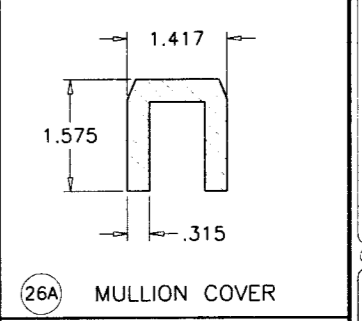
27 THRESHOLD BLOCK



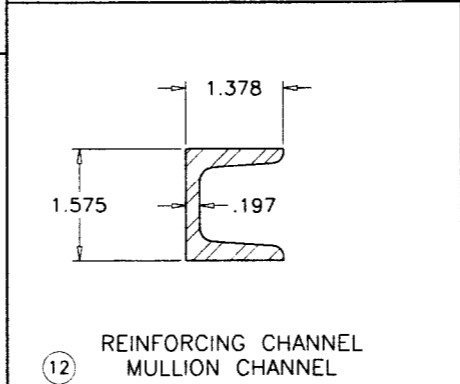
13 ASTRAGAL



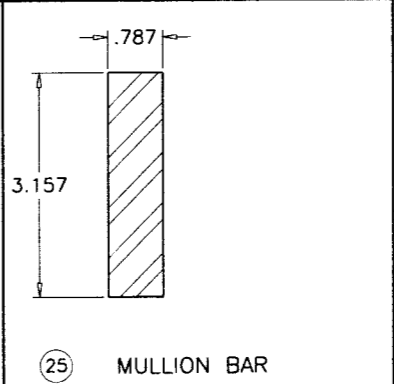
26 MULLION COVER



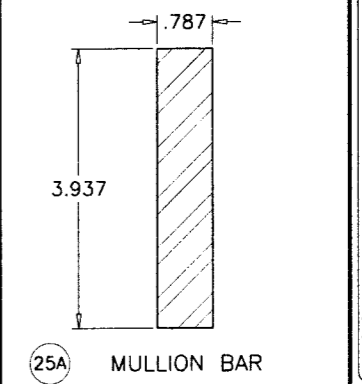
26A MULLION COVER



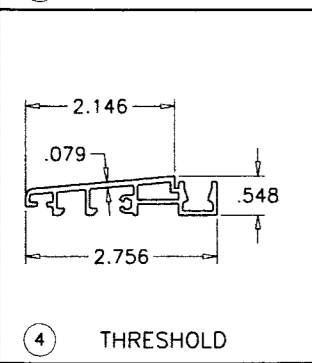
12 REINFORCING CHANNEL MULLION CHANNEL



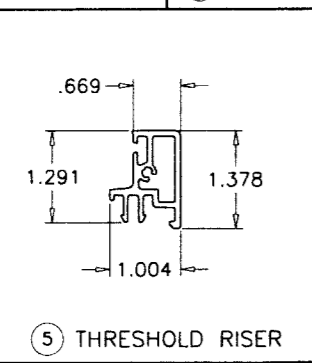
25 MULLION BAR



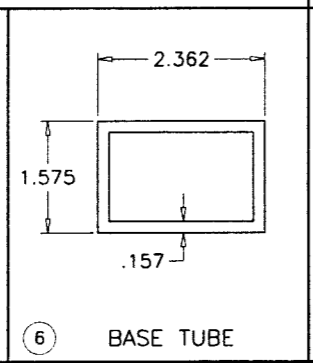
25A MULLION BAR



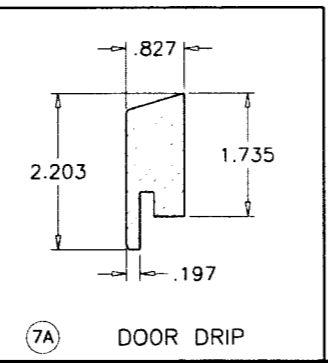
4 THRESHOLD



5 THRESHOLD RISER



6 BASE TUBE



7A DOOR DRIP

Engr: ARSHAD VIQAR
 CIVIL
 FLA. PE # 38863
 C.A.N. 3538
 JUL 13 2009

August 19, 2009
 09-0326.02

af c
AL-FAROOQ CORPORATION
 ENGINEERS & PRODUCT DEVELOPMENT
 1235 S.W. 87 AVE
 MIAMI, FLORIDA 33174
 TEL. (305) 264-8100 FAX. (305) 262-6978
 COMP-ANL\W08-74MNA

WOOD FRAME OUTSWING FRENCH DOOR (L.M.I.)
MONTAG WINDOWS & DOORS
 215 HEMBREE PARK DRIVE, SUITE 100
 ROSWELL, GA 30076
 TEL. (866) 562-1728 FAX. (866) 563-1728

no	date	by	description
A	06.26.09		REV. PER BCCO COMMENTS

date: 08-13-08
 scale: 3/8" = 1"
 dr. by: HAMID
 chk. by:
 drawing no.
W08-74
 sheet 8 of 13

HINGES:

ST. STEEL TWO PIECE BARREL HINGES
 TYPE BAKA C-2-20-WF-V BY SIMONSWERK
 (5) PER LEAF
 AT 8" AND 19-3/4" FROM TOP & BOTTOM
 AND 39" O.C. MAX.

SNUBBERS:

ANTI-BLOW OUT PINS AT HINGE STILES
 (10) PER LEAF LOCATED AT 4-1/4" FROM TOP & BOTTOM
 AND 9-3/4" O.C. MAX.
 EACH FASTENED WITH (2) #10 X 2-3/4" FH WOOD SCREWS
 GUIDES FACING PINS AT HINGE JAMBS
 EACH FASTENED WITH (2) #10 X 2-3/4" FH WOOD SCREWS

LOCKS:

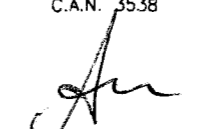
WINKHAUS MULTI POINT LOCK SYSTEM.
 SURFACE MOUNT HANDLES
 ACTIVATED LOCK AT STILES
 (1) LOCK STRIKE PER LEAF AT HEAD
 (1) LOCK STRIKE PER LEAF AT SILL
 (2) LOCK STRIKES AT LOCKING STILE


ITEM	PART #	QUANTITY	DESCRIPTION	MATERIAL	MANF./SUPPLIER/REMARKS
1	-	AS REQD.	FRAME HEAD/JAMB	WHITE MERANTI WOOD	SG = 0.55 (E = 1,600,000 PSI)
2	-	AS REQD.	TOP RAIL/JAMB STILE	WHITE MERANTI WOOD	SG = 0.55 (E = 1,600,000 PSI)
3	-	1/ LEAF	BOTTOM RAIL	WHITE MERANTI WOOD	SG = 0.55 (E = 1,600,000 PSI)
3A	-	1/ LEAF	ALT. LOWER BOTTOM RAIL	WHITE MERANTI WOOD	SG = 0.55 (E = 1,600,000 PSI)
3B	-	1/ LEAF	ALT. UPPER BOTTOM RAIL	WHITE MERANTI WOOD	SG = 0.55 (E = 1,600,000 PSI)
4	-	1/ DOOR	THRESHOLD	6063-T5	-
5	-	1/ DOOR	THRESHOLD RISER	6063-T5	-
6	-	1/ DOOR	BASE TUBE	6063-T5	-
7	-	1/ DOOR	DRIP CAP	WHITE MERANTI WOOD	SG = 0.55 (E = 1,600,000 PSI)
7A	-	AS REQD.	DOOR DRIP	WHITE MERANTI WOOD	SG = 0.55 (E = 1,600,000 PSI)
8	-	AS REQD.	MID RAIL	WHITE MERANTI WOOD	SG = 0.55 (E = 1,600,000 PSI)
9	-	AS REQD.	LOCK STILE	WHITE MERANTI WOOD	SG = 0.55 (E = 1,600,000 PSI)
10	-	AS REQD.	INACTIVE MTG. STILE	WHITE MERANTI WOOD	SG = 0.55 (E = 1,600,000 PSI)
10A	-	AS REQD.	ALT. INACTIVE MTG. STILE	WHITE MERANTI WOOD	SG = 0.55 (E = 1,600,000 PSI)
11	-	AS REQD.	ACTIVE MTG. STILE	WHITE MERANTI WOOD	SG = 0.55 (E = 1,600,000 PSI)
11A	-	AS REQD.	ALT. ACTIVE MTG. STILE	WHITE MERANTI WOOD	SG = 0.55 (E = 1,600,000 PSI)
12	-	AS REQD.	REINFORCING/MULLION CHANNEL	GALV. STEEL	A238C OR EQUIV.
13	-	AS REQD.	ASTRAGAL	WHITE MERANTI WOOD	SG = 0.55 (E = 1,600,000 PSI)
14	-	4/ LEAF	GLAZING BEAD	WHITE MERANTI WOOD	SG = 0.55 (E = 1,600,000 PSI)
15	-	4/ LEAF	GLAZING TAPE	FOAM	-
16	SF 1029-GG/2	AS REQD.	EXTERIOR WEATHERSTRIPPING	THERMOPLASTIC	GOLL GMBH
17	SF 1016-GG/2	AS REQD.	INTERIOR WEATHERSTRIPPING	THERMOPLASTIC	GOLL GMBH
19	S 6600C	AS REQD.	MTG. STILE WEATHERSTRIPPING	THERMOPLASTIC	DEVENTER GMBH
20	-	AS REQD.	SNUBBERS	-	MACO TRICOAT
21	-	5/ LEAF	HINGES	ST. STEEL	SIMONSWERK, A304
22	-	1/ LEAF	MULTI POINT LOCK SYSTEM	-	WINKHAUS
23	-	-	LOCKING PLATE	ST. STEEL	1-3/8" X 7-1/4" X .118", A304
23A	-	-	ALT. LOCKING PLATE (HEAD)	ST. STEEL	1-3/8" X 7-9/32" X 1/4", A304
23B	-	-	ALT. LOCKING PLATE (SILL)	ST. STEEL	1-3/8" X 7-9/32" X 1/8", A304
24	#8 X 2-1/4"	AS REQD.	DRIP CAP SCREWS	-	AT 3" FROM ENDS AND 14" O.C.
25	-	AS REQD.	MULLION BAR (20 mm X 80 mm)	GALV. STEEL	A238C OR EQUIV.
25A	-	AS REQD.	MULLION BAR (20 mm X 100 mm)	GALV. STEEL	A238C OR EQUIV.
26	-	1/ MULLION	MULLION COVER	WHITE MERANTI WOOD	SG = 0.55 (E = 1,600,000 PSI)
26A	-	1/ MULLION	MULLION COVER	WHITE MERANTI WOOD	SG = 0.55 (E = 1,600,000 PSI)
27	-	1	THRESHOLD BLOCK	6063-T5	-

af c
AL-FAROOQ CORPORATION
 ENGINEERS & PRODUCT DEVELOPMENT
 1235 S.W. 87 AVE
 MIAMI, FLORIDA 33174
 TEL. (305) 264-8100 FAX. (305) 262-6978
 COMP - ANL \ W08 - 74MNA

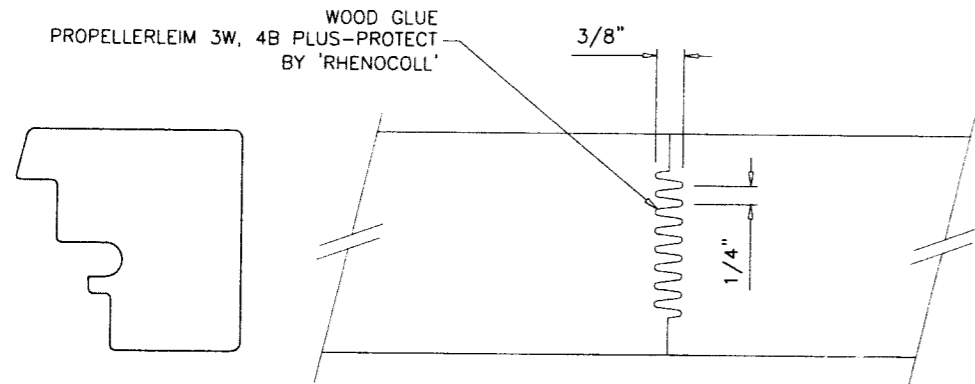
WOOD FRAME OUTSWING FRENCH DOOR (L.M.I.)
MONTAG WINDOWS & DOORS
 215 HEMBREE PARK DRIVE, SUITE 100
 ROSWELL, GA 30076
 TEL. (866) 562-1728 FAX. (866) 563-1728

no	date	by	description
A	06/26/09		REV. PER BCCO COMMENTS

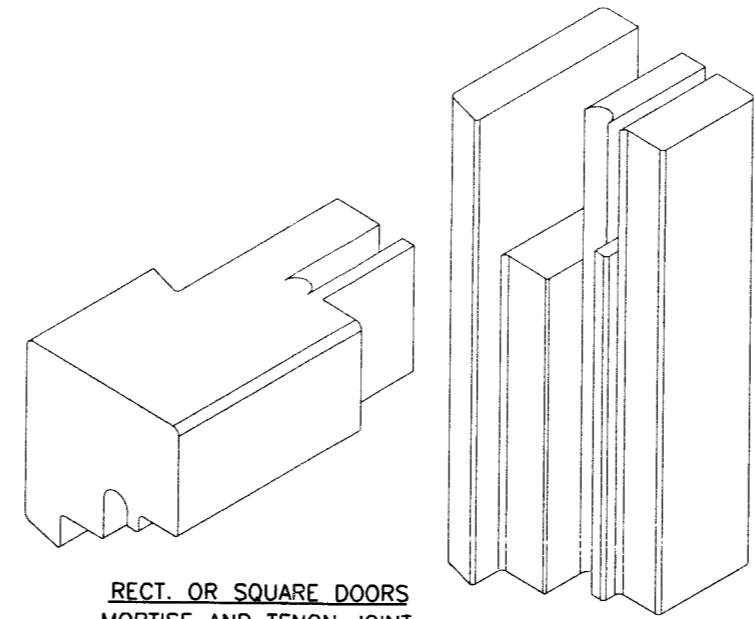
Eng: ARSHAD VIQAR
 CIVIL
 FLA. PE # 38863
 C.A.N. 3538

 JUL 13 2009

Approved as complying with the
 Florida Building Code
 Date **AUGUST 19, 2009**
 NCAP **09-0326.02**
 Miami Dade Product Control
 Division
 By 

date: 08-13-08
 scale: 3/8" = 1"
 dr. by: HAMID
 chk. by:
 drawing no.
W08-74
 sheet 9 of 13

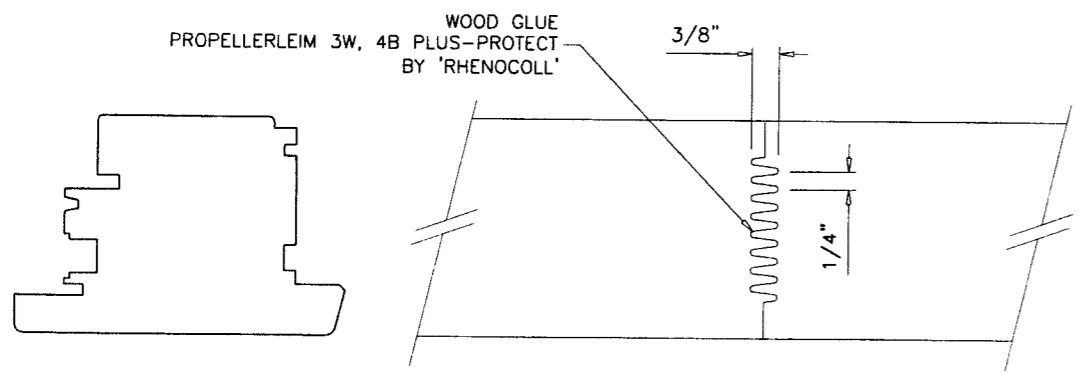


CIRCULAR DOORS
FINGER JOINT
VIEWED FROM ABOVE

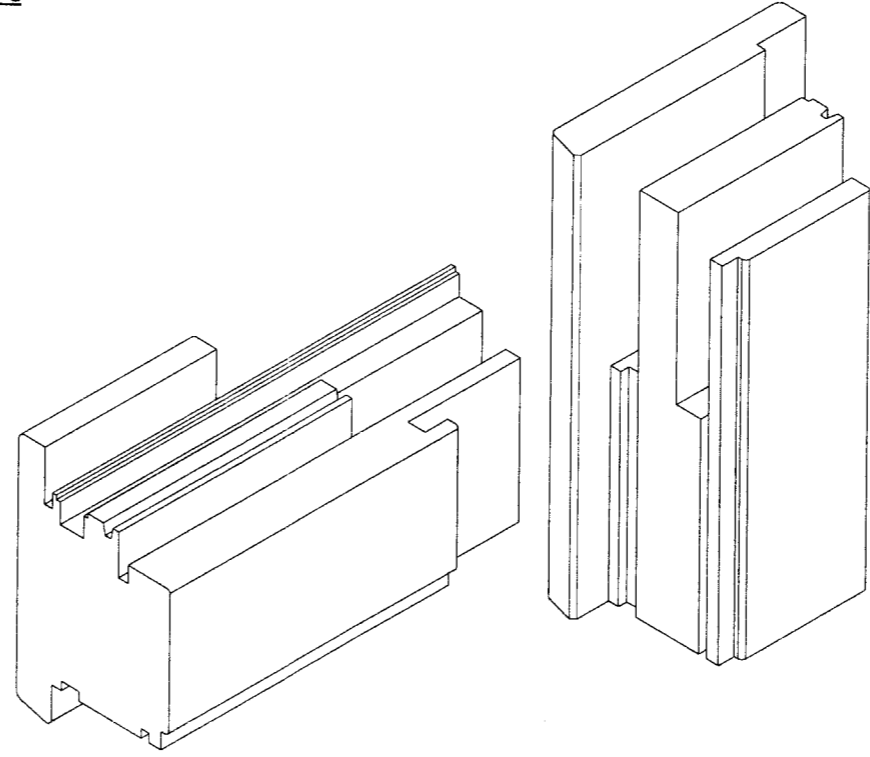


RECT. OR SQUARE DOORS
MORTISE AND TENON JOINT

FRAME CORNERS



CIRCULAR DOORS
FINGER JOINT
VIEWED FROM ABOVE



RECT. OR SQUARE DOORS
MORTISE AND TENON JOINT

LEAF CORNERS

FRAME CORNERS SEALED/GLUED WITH WATER PROOF ADHESIVE

Engr: ARSHAD VIGAR
CIVIL
FLA. PE # 38863
C.A.N. 3538

JUL 13 2009

Approved as complying with the
Florida Building Code
Date: **AUGUST 19, 2009**
NOA#: **09-0326.02**
Miami Dade Product Control
By: *[Signature]*

af c
AL-FAROOQ CORPORATION
ENGINEERS & PRODUCT DEVELOPMENT
1235 S.W. 87 AVE
MIAMI, FLORIDA 33174
TEL. (305) 264-8100 FAX. (305) 262-6978
COMP-ANL\W08-74MNA

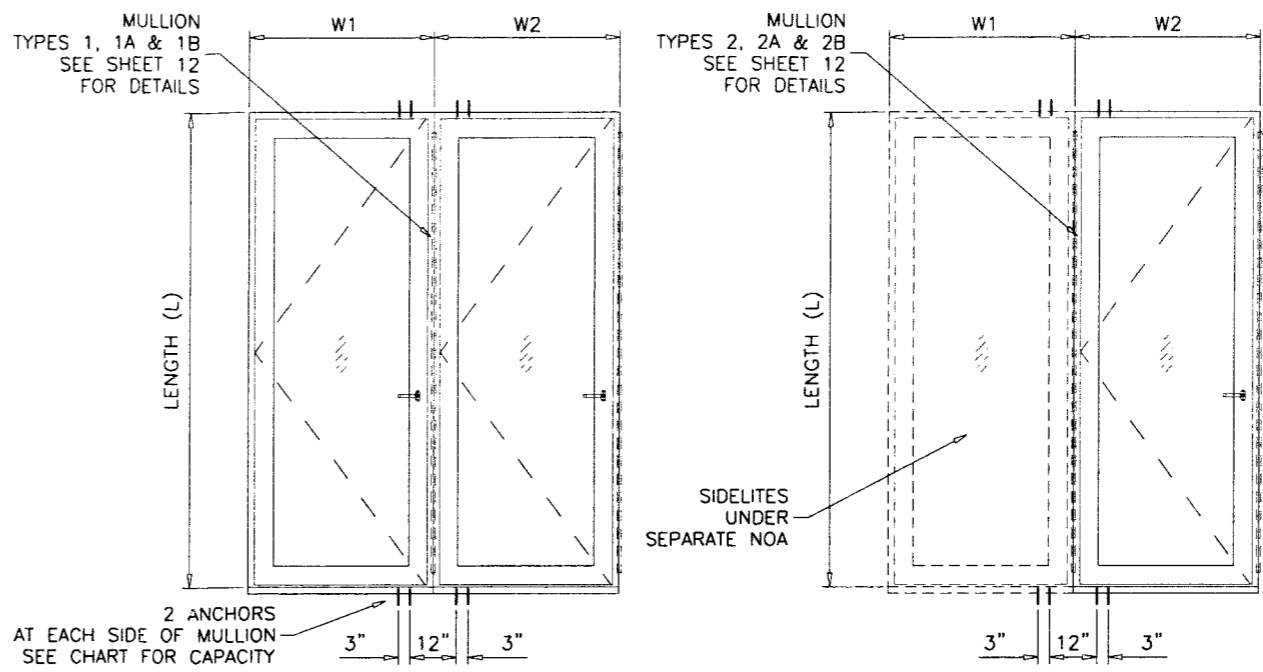
WOOD FRAME OUTSWING FRENCH DOOR (L.M.I.)
MONTAG WINDOWS & DOORS
215 HEMBREE PARK DRIVE, SUITE 100
ROSWELL, GA 30076
TEL. (866) 562-1728 FAX. (866) 563-1728

no	date	by	description
A	06.26.09		REV. PER BCCO COMMENTS

date: 08-13-08
scale: 3/8" = 1"
dr. by: HAMID
chk. by:

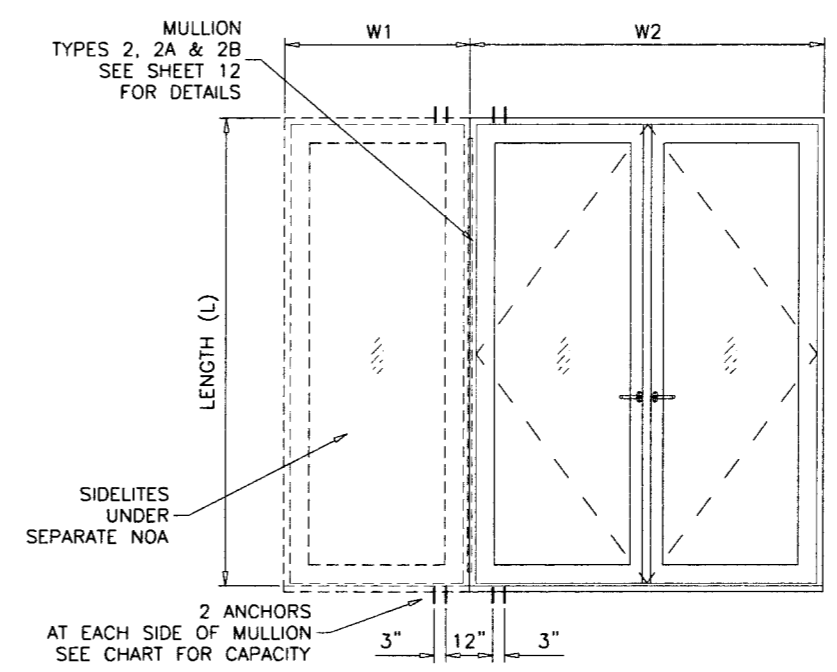
drawing no.
W08-74
sheet 10 of 13

MULLION LOAD CAPACITY - PSF				
DOOR DIMS.		MULLION TYPES '1' & '2'	MULLION TYPES '1A' & '2A'	MULLION TYPES '1B' & '2B'
WIDTH (W)	LENGTH (L)	EXT. (+) INT. (-)	EXT. (+) INT. (-)	EXT. (+) INT. (-)
24"	84"	78.0	78.0	78.0
27"		78.0	78.0	78.0
30"		78.0	78.0	78.0
33"		78.0	78.0	78.0
36"		78.0	78.0	78.0
39"		78.0	78.0	78.0
42"	78.0	78.0	78.0	
45"	78.0	78.0	78.0	
24"	90"	78.0	78.0	78.0
27"		78.0	78.0	78.0
30"		78.0	78.0	78.0
33"		78.0	78.0	78.0
36"		78.0	78.0	78.0
39"		78.0	78.0	78.0
42"	78.0	78.0	78.0	
45"	76.8	78.0	78.0	
24"	96"	78.0	78.0	78.0
27"		78.0	78.0	78.0
30"		78.0	78.0	78.0
33"		78.0	78.0	78.0
36"		78.0	78.0	78.0
39"		73.0	78.0	78.0
42"	67.8	78.0	78.0	
45"	63.3	78.0	78.0	
24"	102"	78.0	78.0	78.0
27"		78.0	78.0	78.0
30"		78.0	78.0	78.0
33"		72.0	78.0	78.0
36"		66.0	78.0	78.0
39"		60.9	78.0	78.0
42"	56.5	78.0	78.0	
45"	52.8	78.0	78.0	
24"	108"	78.0	78.0	78.0
27"		74.1	78.0	78.0
30"		66.7	78.0	78.0
33"		60.6	78.0	78.0
36"		55.6	78.0	78.0
39"		51.3	78.0	78.0
42"	47.6	78.0	78.0	
45"	-	75.6	78.0	
24"	114"	70.9	78.0	78.0
27"		63.0	78.0	78.0
30"		56.7	78.0	78.0
33"		51.6	78.0	78.0
36"		47.3	78.0	78.0
39"		43.6	78.0	78.0
42"	-	74.8	78.0	
45"	-	-	78.0	
24"	120"	60.8	78.0	78.0
27"		54.0	78.0	78.0
30"		48.6	78.0	78.0
33"		44.2	78.0	78.0
36"		40.5	74.8	78.0
39"		37.4	69.0	78.0
42"	-	64.1	78.0	



$$\text{WIDTH (W)} = \frac{W1 + W2}{2}$$

$$\text{WIDTH (W)} = \frac{W1 + W2}{2}$$



$$\text{WIDTH (W)} = \frac{W1}{2} + \frac{W2}{4}$$

TYPICAL ELEVATIONS
SIDE BY SIDE DOORS
SIDE BY SIDE APPLIES TO TWO OR MORE DOORS

NOTES:

1. USE CHART ON THIS SHEET FOR SIDE BY SIDE CONNECTION CAPACITY OF DOOR MULLION.
2. FOR FRENCH DOOR CAPACITY SEE SHEET 2 OF 13.
3. FOR SIDELITE WINDOW CAPACITY SEE SEPARATE NOA.
4. LOWER VALUES FROM STEPS 1, 2 OR 3 WILL APPLY TO ENTIRE SYSTEM.

Engr: ARSHAD VIQAR
CIVIL
FLA. PE # 38863
C.A.N. 3538

JUL 13 2009

Approved as complying with the
Florida Building Code
Date AUGUST 19, 2009
NOA# 09-0320.02
Miami Dept Product Control
Division
By [Signature]

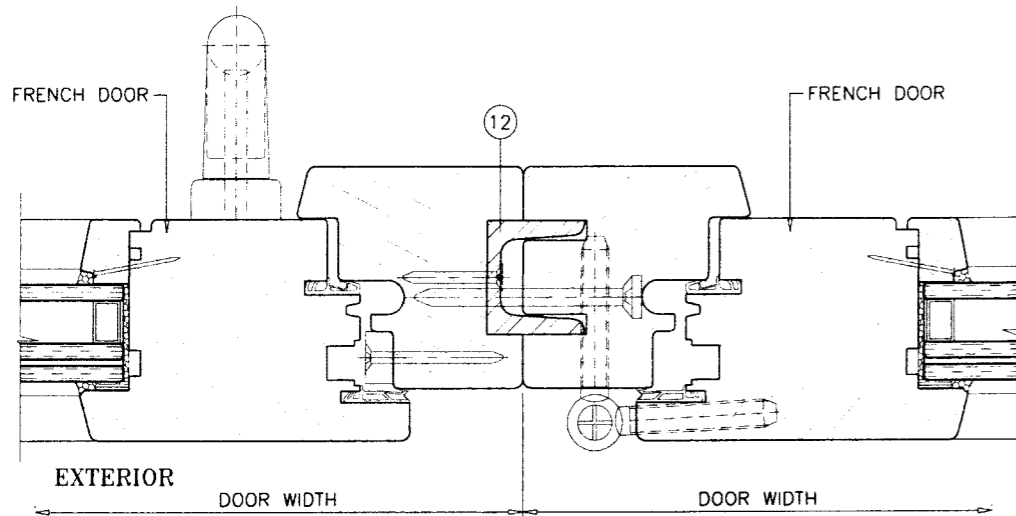
afC
AL-FAROOQ CORPORATION
ENGINEERS & PRODUCT DEVELOPMENT
1235 S.W. 87 AVE
MIAMI, FLORIDA 33174
TEL. (305) 264-8100 FAX. (305) 262-6978
COMP - ANL \ W08 - 74MNA

WOOD FRAME OUTSWING FRENCH DOOR (L.M.I.)
MONTAG WINDOWS & DOORS
215 HEMBREE PARK DRIVE, SUITE 100
ROSWELL, GA 30076
TEL. (866) 562-1728 FAX. (866) 563-1728

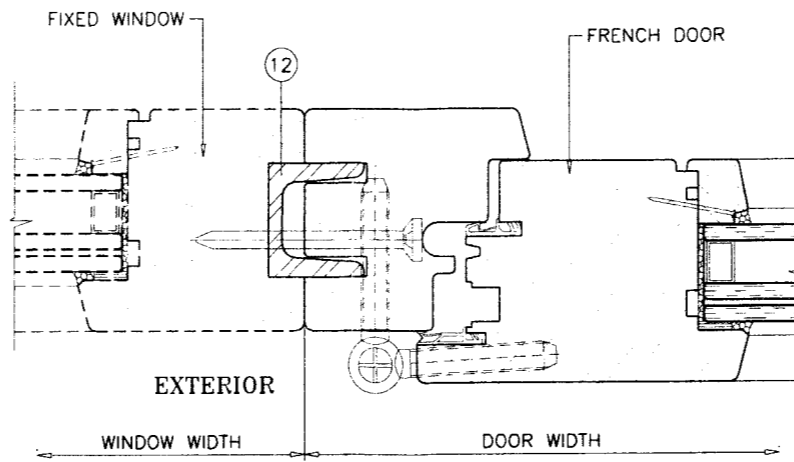
revisions:	no	date	by	description
	A	06.26.09	REV. PER	BCCO COMMENTS

date: 08-13-08
scale: 3/8" = 1"
dr. by: HAMID
chk. by:

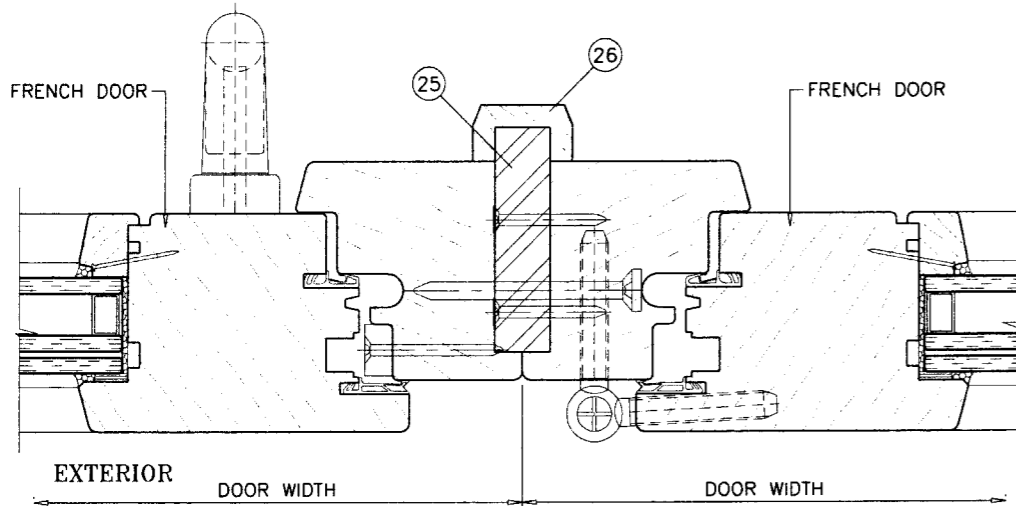
drawing no.
W08-74
sheet 11 of 13



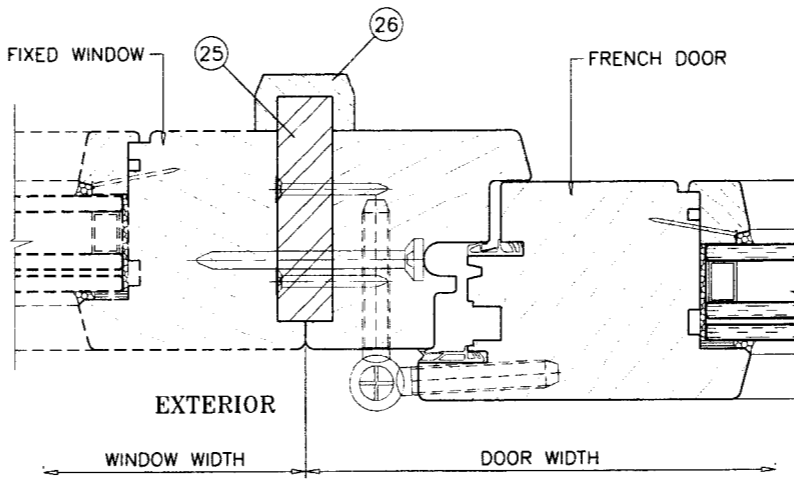
MULLION TYPE '1'



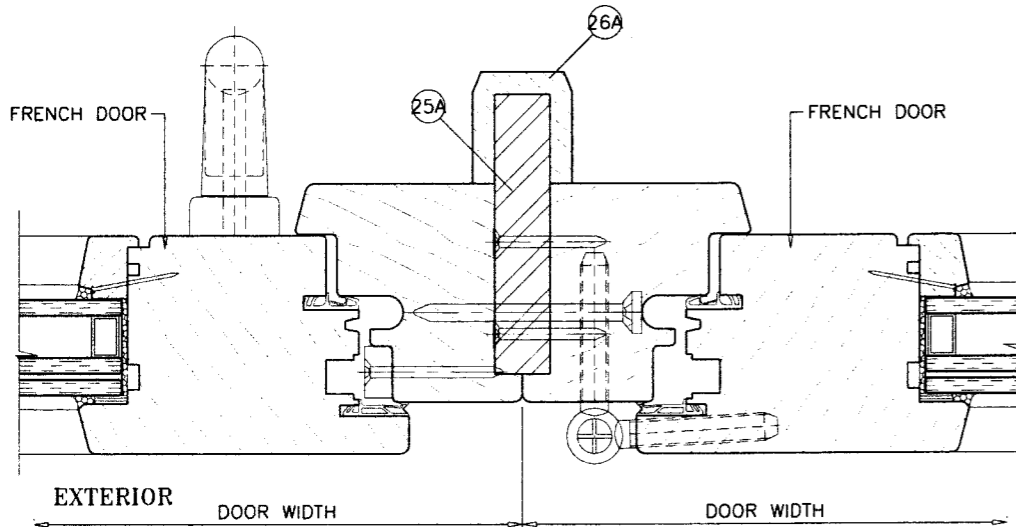
MULLION TYPE '2'



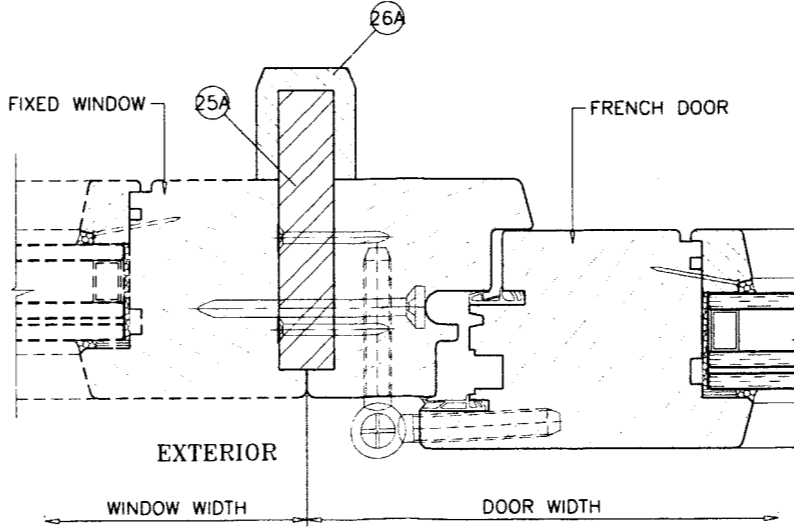
MULLION TYPE '1A'



MULLION TYPE '2A'



MULLION TYPE '1B'



MULLION TYPE '2B'

Engr: ARSHAD VIQAR
 CIVIL
 FLA. PE # 38863
 C.A.N. 3538

[Signature]

JUL 18 2009

Approved as complying with the
 Florida Building Code
 Date AUGUST 19, 2009
 NOA# 09-0326.02
 Miami Dade Product Control
 Division
 By *[Signature]*

afC

AL-FAROOQ CORPORATION
 ENGINEERS & PRODUCT DEVELOPMENT
 1235 S.W. 87 AVE
 MIAMI, FLORIDA 33174
 TEL. (305) 264-8100 FAX. (305) 262-6978
 COMP - ANL \ W08 - 74MNA

WOOD FRAME OUTSWING FRENCH DOOR (L.M.I.)

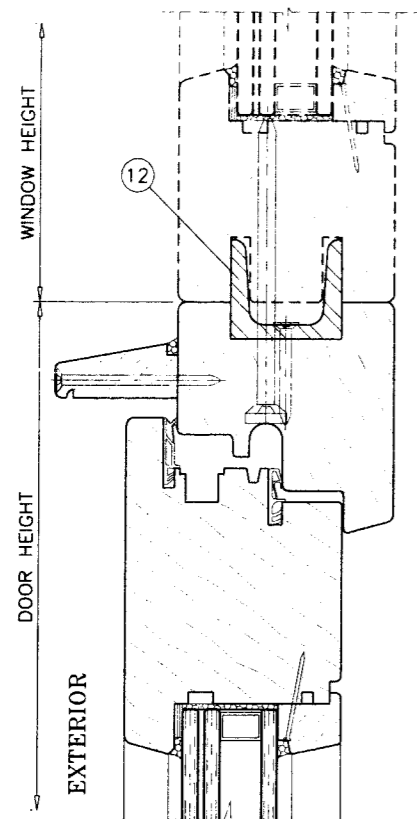
MONTAG WINDOWS & DOORS
 215 HEMBREE PARK DRIVE, SUITE 100
 ROSWELL, GA 30076
 TEL. (866) 562-1728 FAX. (866) 563-1728

revisions:	
no	date by description
A	06.26.09 REV. PER BCCO COMMENTS

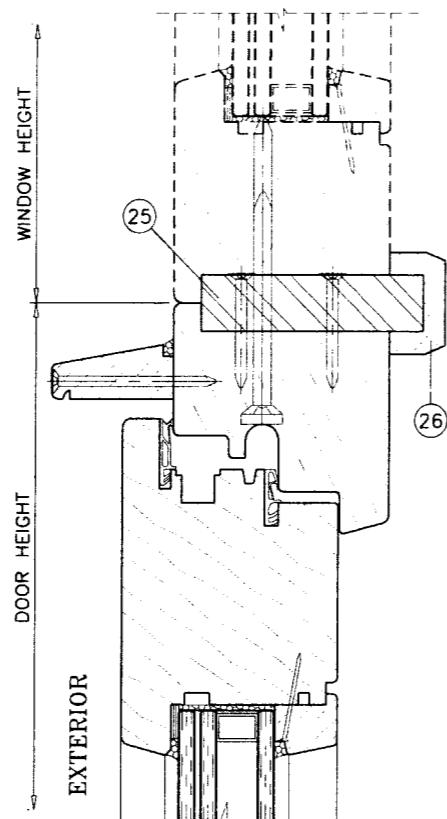
date: 08-13-08
 scale: 3/8" = 1"
 dr. by: HAMID
 chk. by:

drawing no.
W08-74

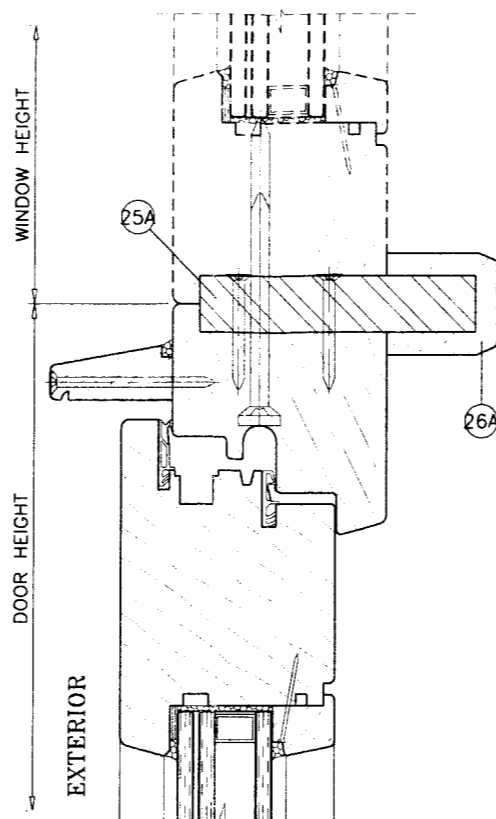
sheet 12 of 13



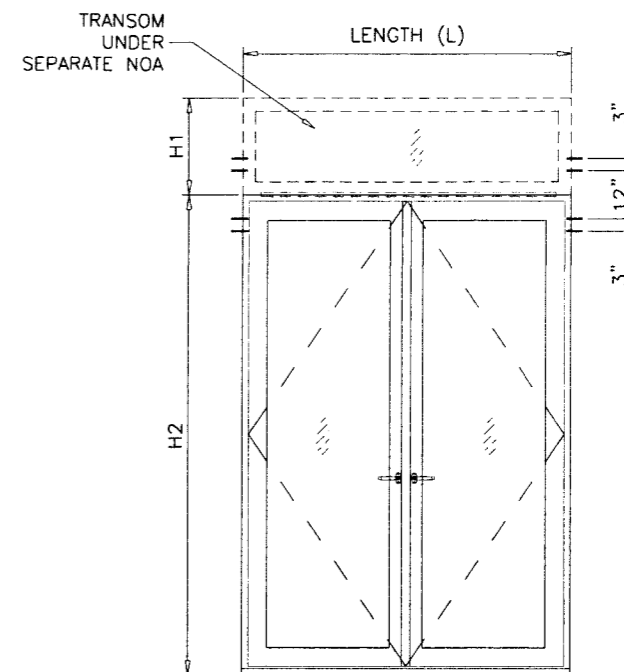
MULLION TYPE '3'



MULLION TYPE '3A'



MULLION TYPE '3B'



TYPICAL ELEVATION
DOOR WITH TRANSOM

MULLION LOAD CAPACITY - PSF								
DOOR DIMS.			MULLION TYPE '3'		MULLION TYPE '3A'		MULLION TYPE '3B'	
LENGTH (L)	HEIGHT (H1)	HEIGHT (H2)	EXT.(+)	INT.(-)	EXT.(+)	INT.(-)	EXT.(+)	INT.(-)
60"	31-13/16"	112-3/16"	65.0	78.0	65.0	78.0	65.0	78.0
66"	29-1/4"	114-3/4"	65.0	65.0	65.0	78.0	65.0	78.0
72"	27-3/16"	116-13/16"	55.0	55.0	65.0	78.0	65.0	78.0
78"	25-1/2"	118-1/2"	-	-	65.0	78.0	65.0	78.0
84"	24"	120-1/16"	-	-	65.0	78.0	65.0	78.0

NOTES:

1. USE CHART ON THIS SHEET FOR TRANSOM MULLION CAPACITY.
2. FOR FRENCH DOOR CAPACITY SEE SHEET 2 OF 13.
3. FOR TRANSOM WINDOW CAPACITY SEE SEPARATE NOA.
4. LOWER VALUES FROM STEPS 1, 2 OR 3 WILL APPLY TO ENTIRE SYSTEM.

Engr. ARSHAD VIQAR
CIVIL
FLA. PE # 38863
C.A.N. 3538
JUL 13 2009

Approved as complying with the
Florida Building Code
Date AUGUST 19 2009
NOA# 09-0326.02
Miami Dept Product Control
Division
By *[Signature]*

af c
AL-FAROOQ CORPORATION
ENGINEERS & PRODUCT DEVELOPMENT
1235 S.W. 87 AVE
MIAMI, FLORIDA 33174
TEL. (305) 264-8100 FAX. (305) 262-6978
COMP - ANL \ W08 - 74MNA

WOOD FRAME OUTSWING FRENCH DOOR (L.M.I.)
MONTAG WINDOWS & DOORS
215 HEMBREE PARK DRIVE, SUITE 100
ROSWELL, GA 30076
TEL. (866) 562-1728 FAX. (866) 563-1728

no.	date	by	description
A	06.26.09		REV. PER BCCO COMMENTS

date: 08-13-08
scale: 3/8" = 1"
dr. by: HAMID
chk. by:

drawing no.
W08-74
sheet 13 of 13